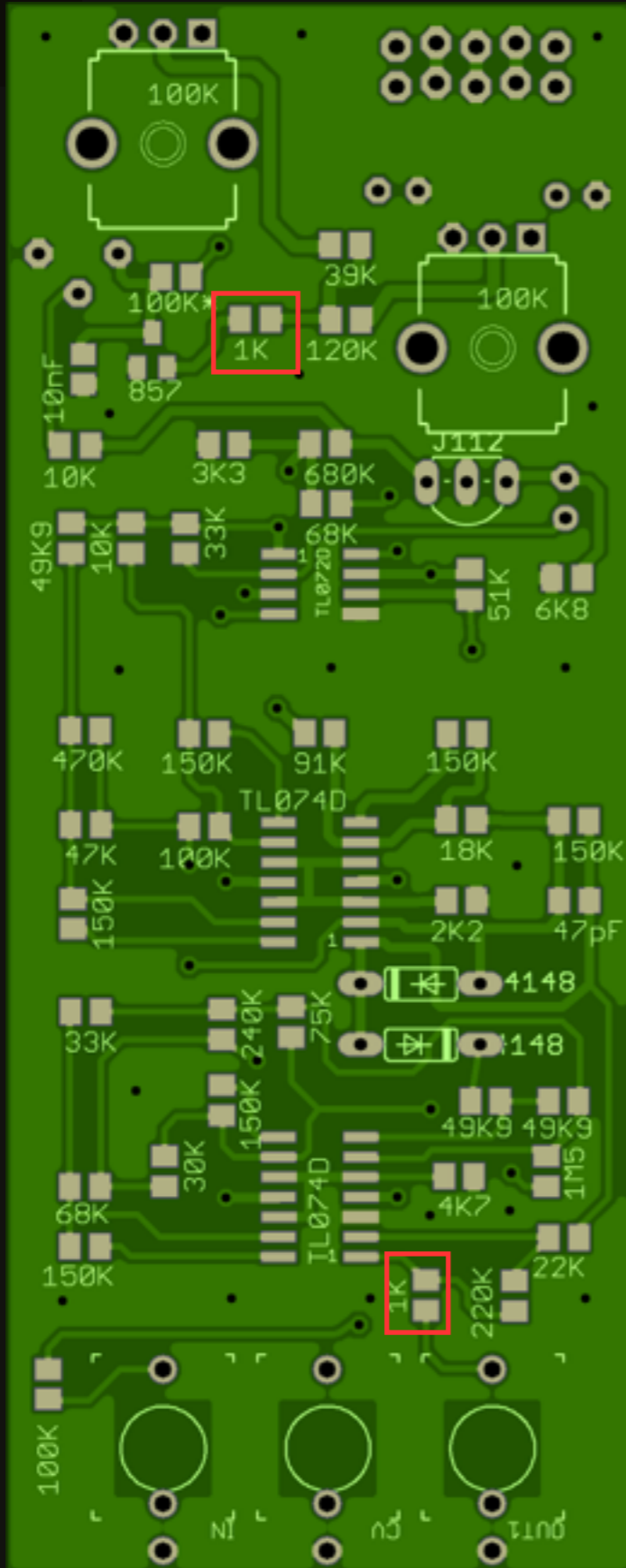




Origami

Build Docs

Resistors



Part Value

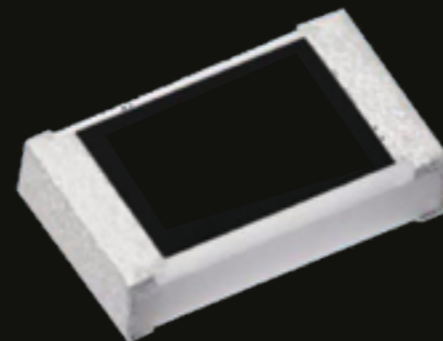
1K Ohm (1,000 Ohms)

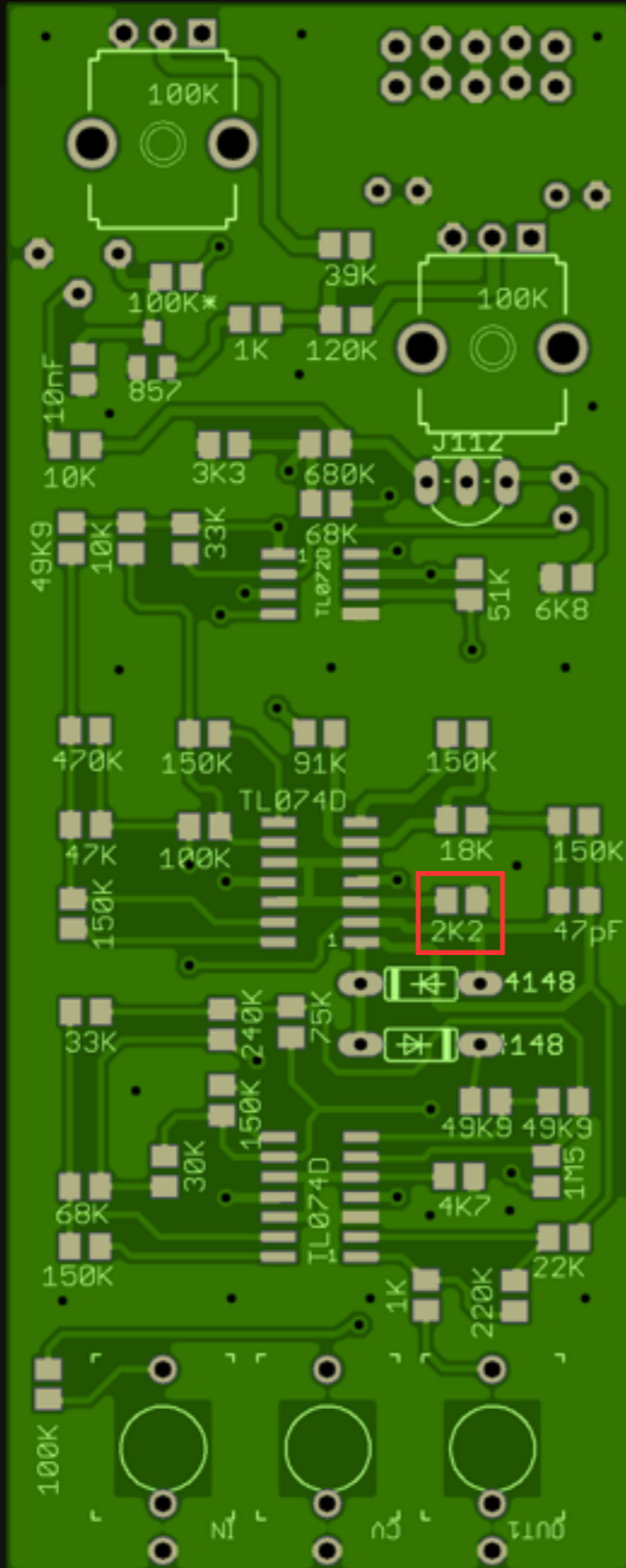
Amount

2 of

Orientation

Bipolar (either direction)





Part Value

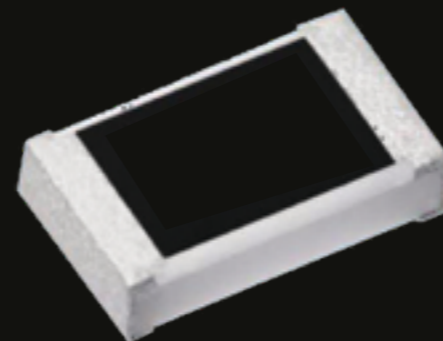
2K2 Ohm (2,200 Ohms)

Amount

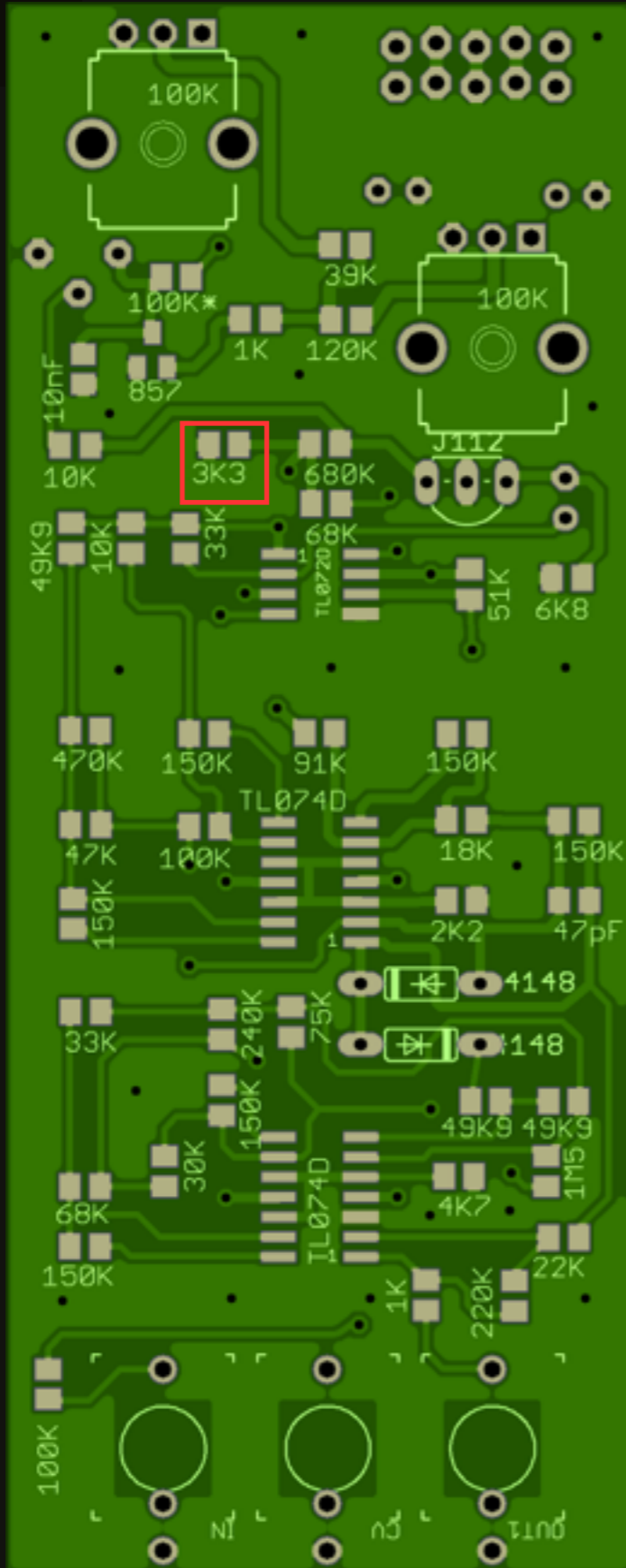
1 of

Orientation

Bipolar (either direction)



Resistors



Part Value

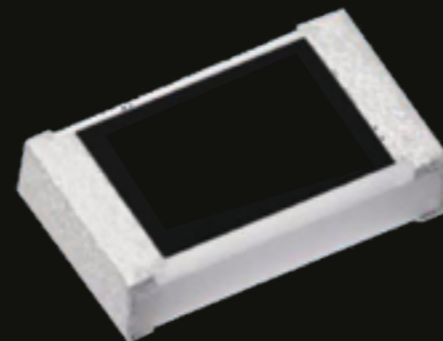
3K3 Ohm (3,300 Ohms)

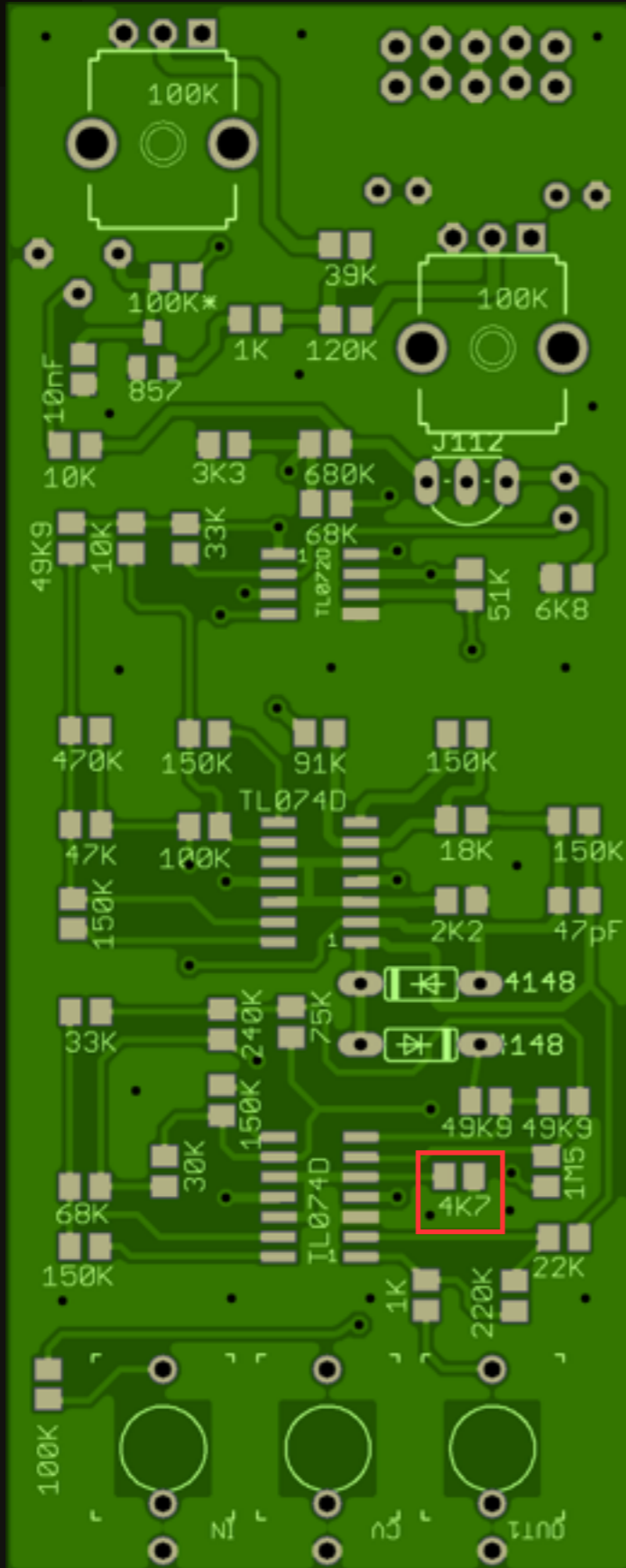
Amount

1 of

Orientation

Bipolar (either direction)





Part Value

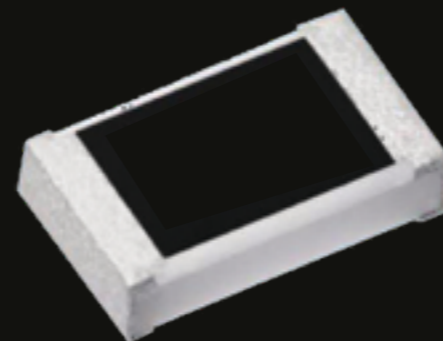
4K7 Ohm (4,700 Ohms)

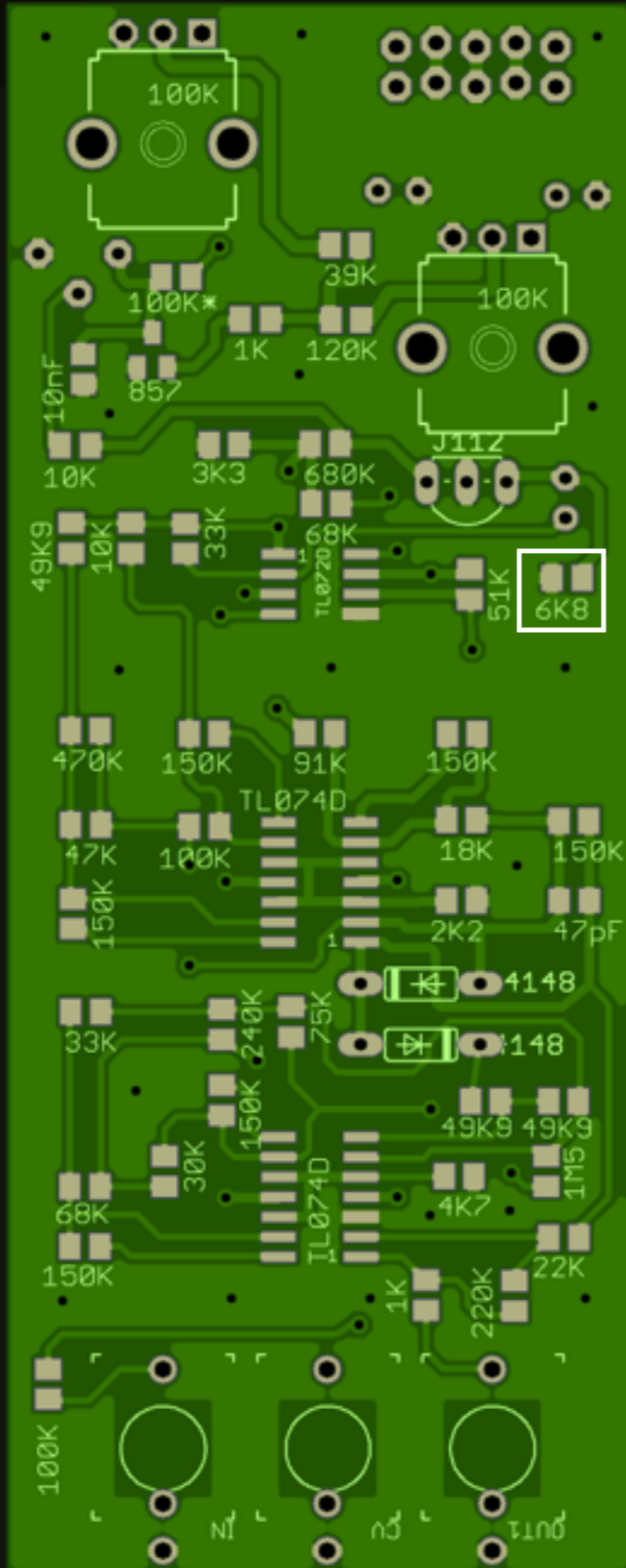
Amount

1 of

Orientation

Bipolar (either direction)





Part Value

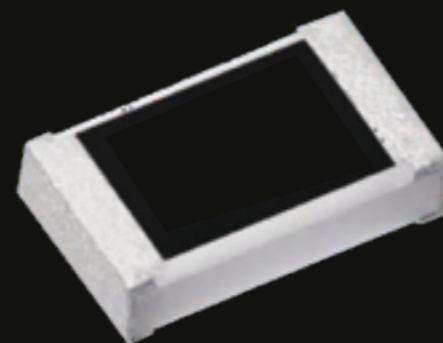
6K8 Ohm (6,800 Ohms)

Amount

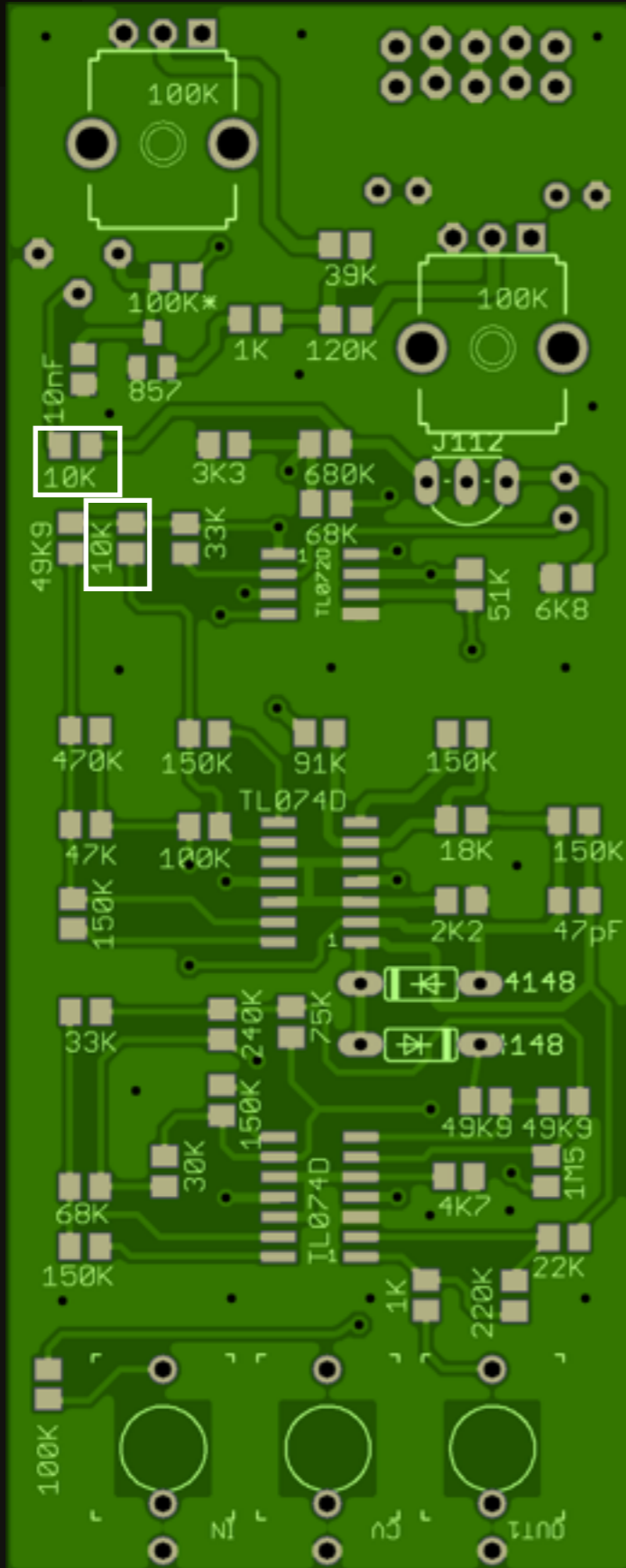
1 of

Orientation

Bipolar (either direction)



Resistors



Part Value

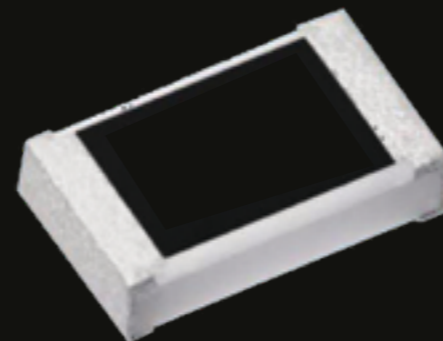
10K Ohm (10,000 Ohms)

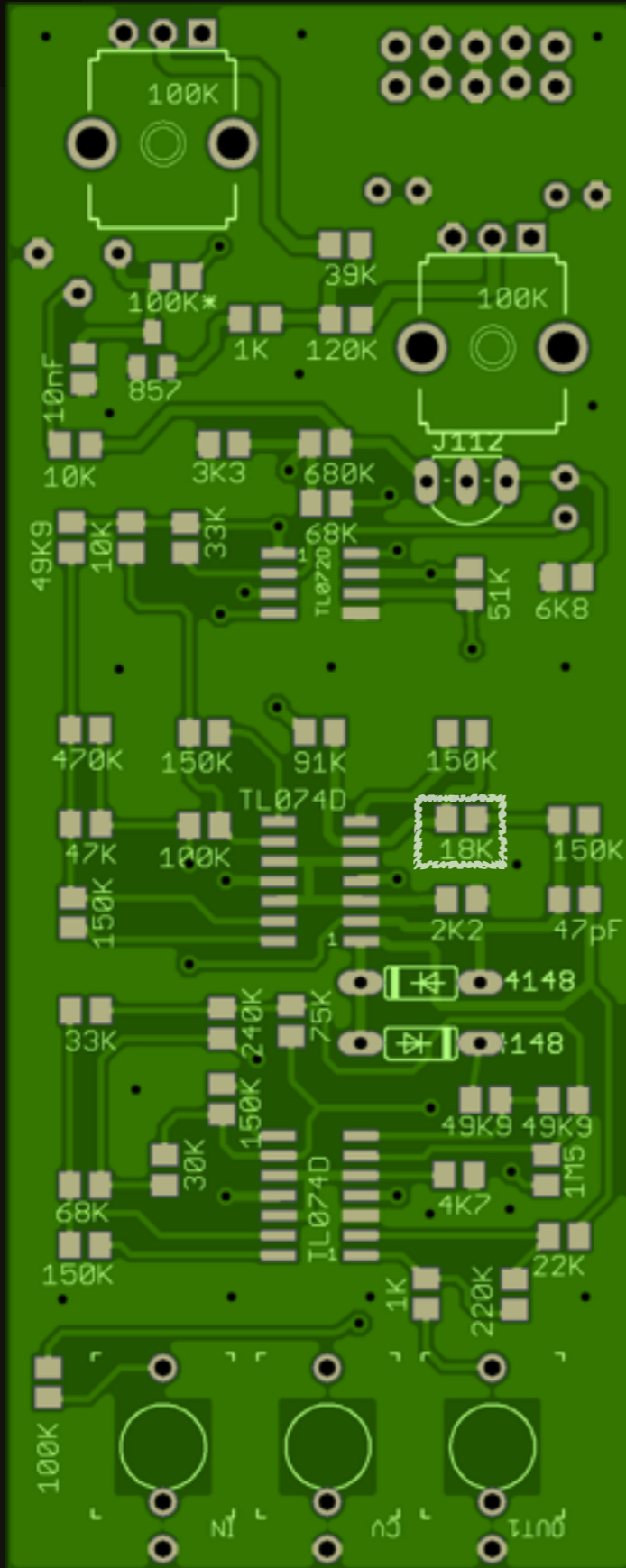
Amount

2 of

Orientation

Bipolar (either direction)





Part Value

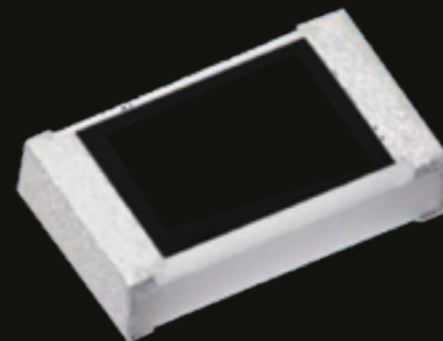
18K Ohm (18,000 Ohms)

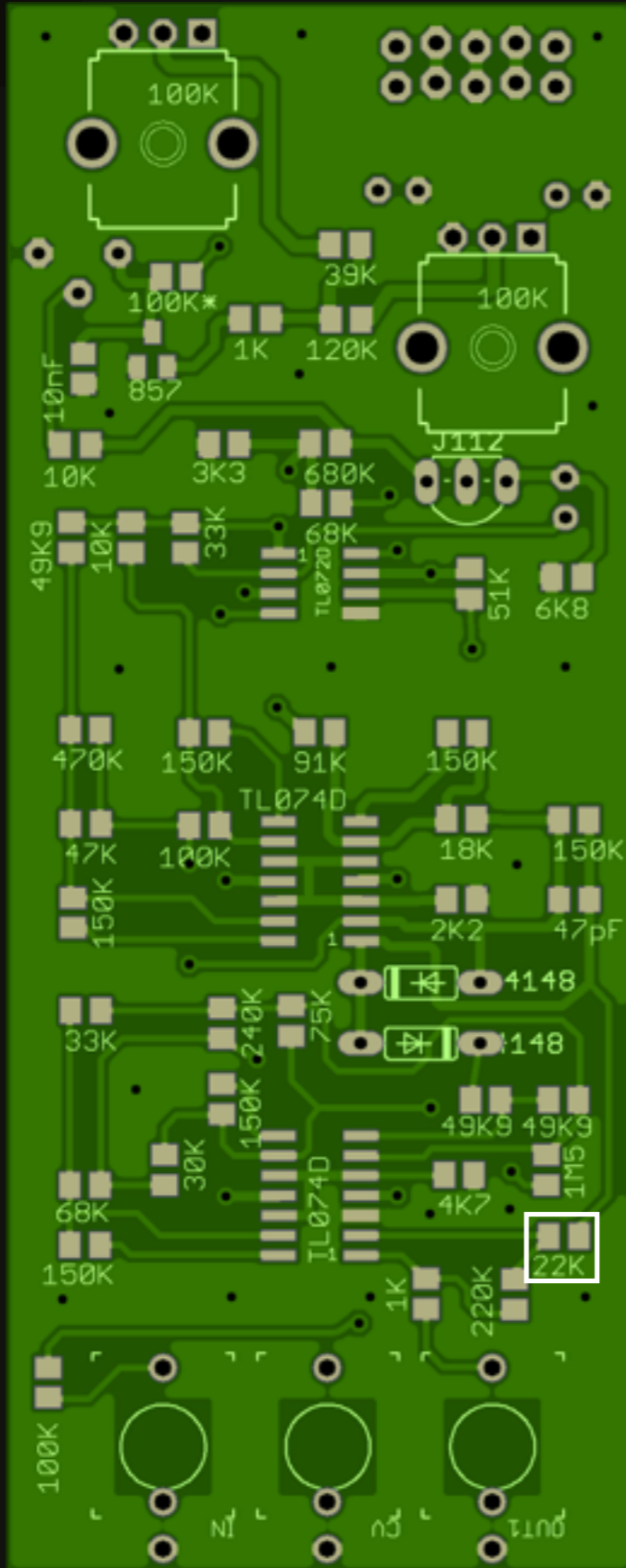
Amount

1 of

Orientation

Bipolar (either direction)





Part Value

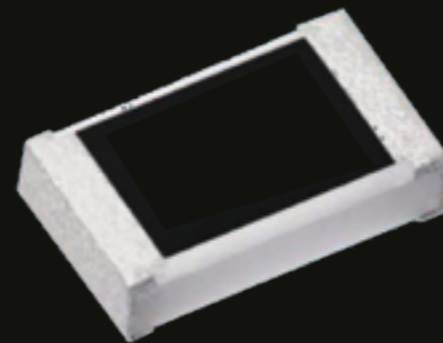
22K Ohm (22,000 Ohms)

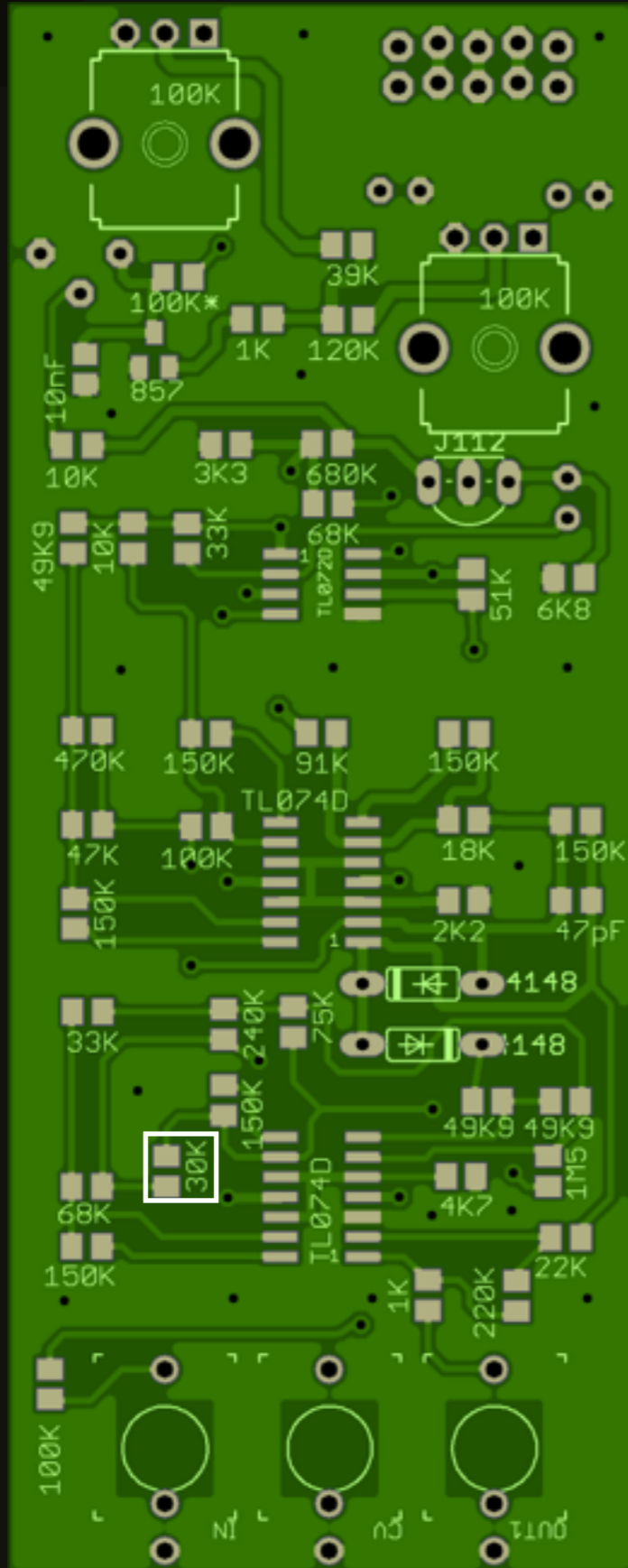
Amount

1 of

Orientation

Bipolar (either direction)





Part Value

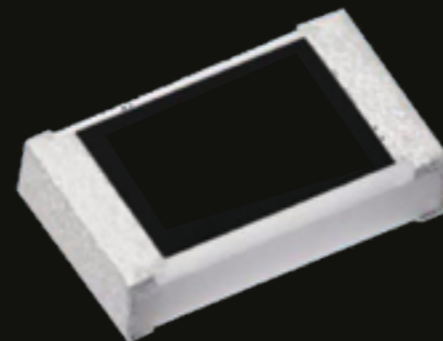
30K Ohm (30,000 Ohms)

Amount

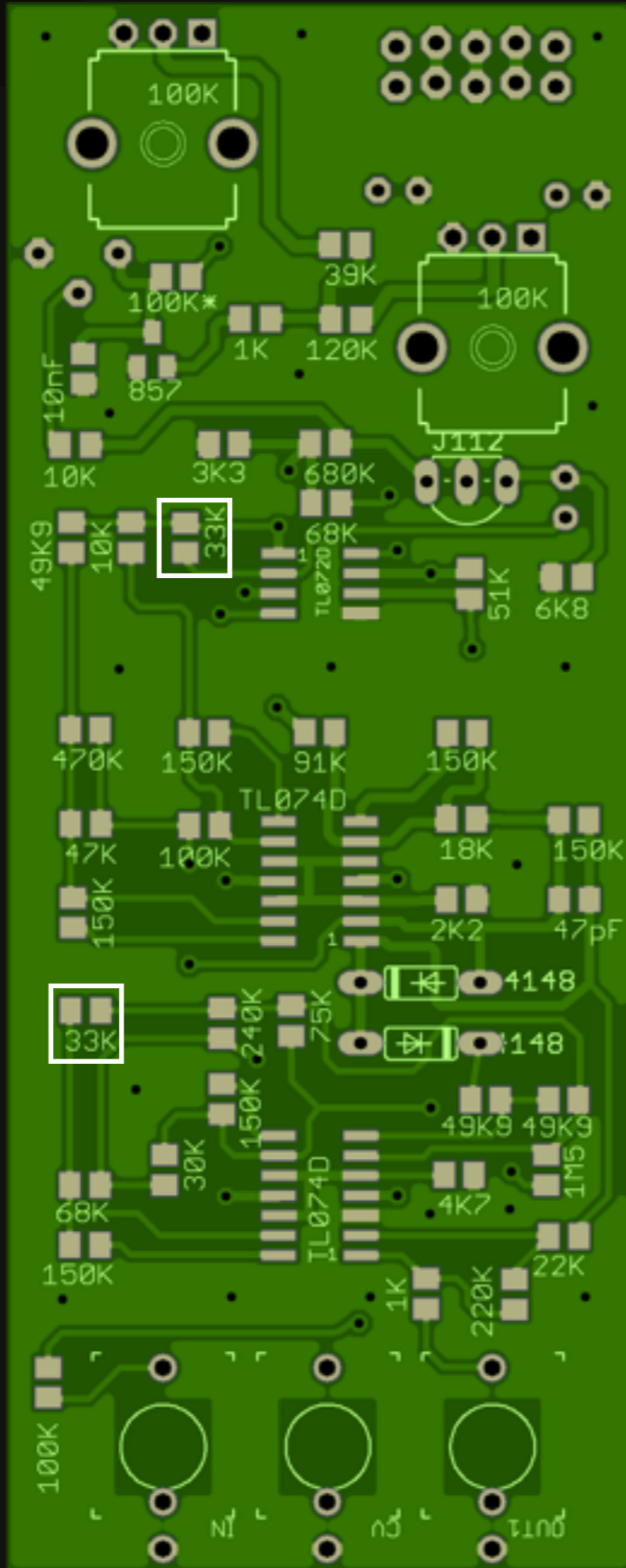
1 of

Orientation

Bipolar (either direction)



Resistors



Part Value

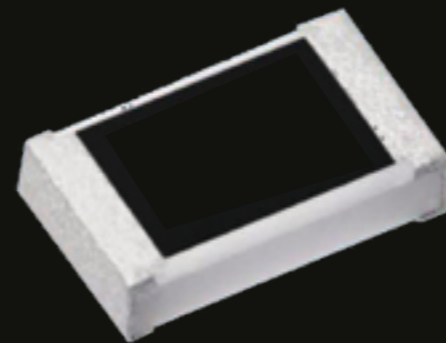
33K Ohm (33,000 Ohms)

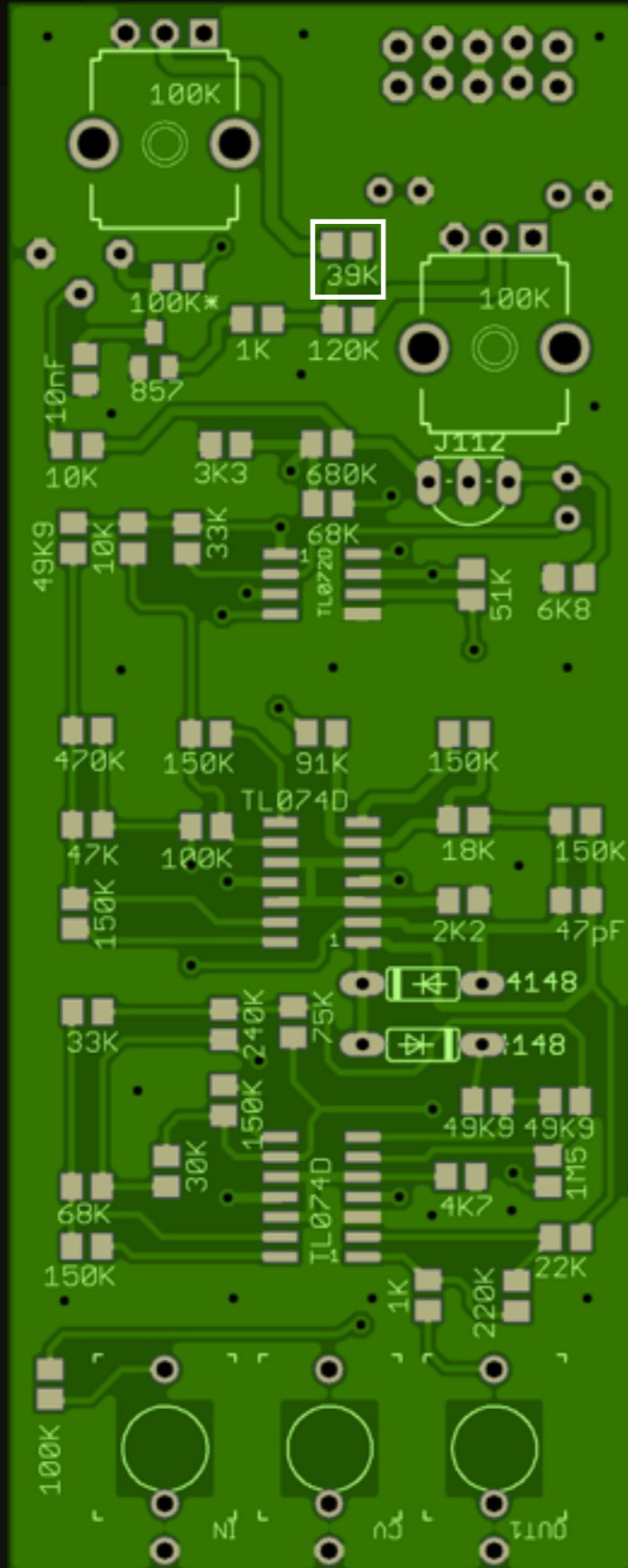
Amount

2 of

Orientation

Bipolar (either direction)





Part Value

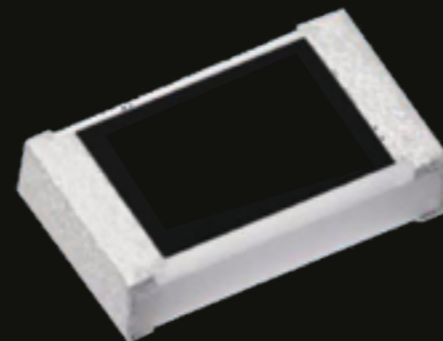
39K Ohm (39,000 Ohms)

Amount

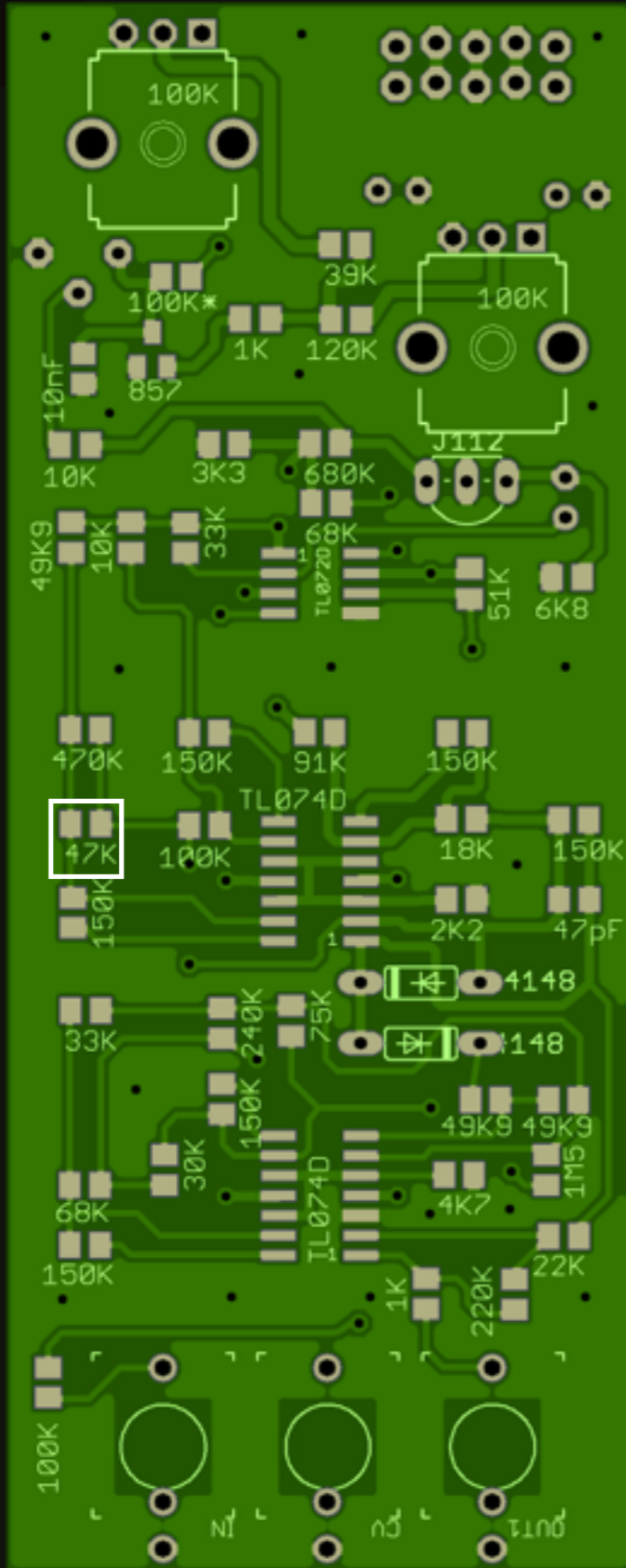
1 of

Orientation

Bipolar (either direction)



Resistors



Part Value

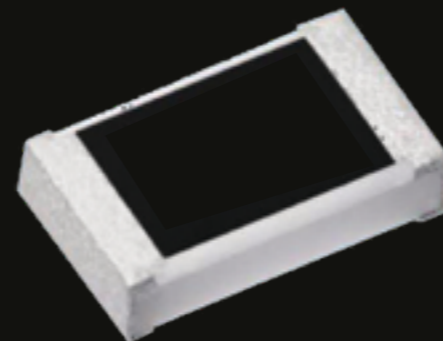
47K Ohm (47,000 Ohms)

Amount

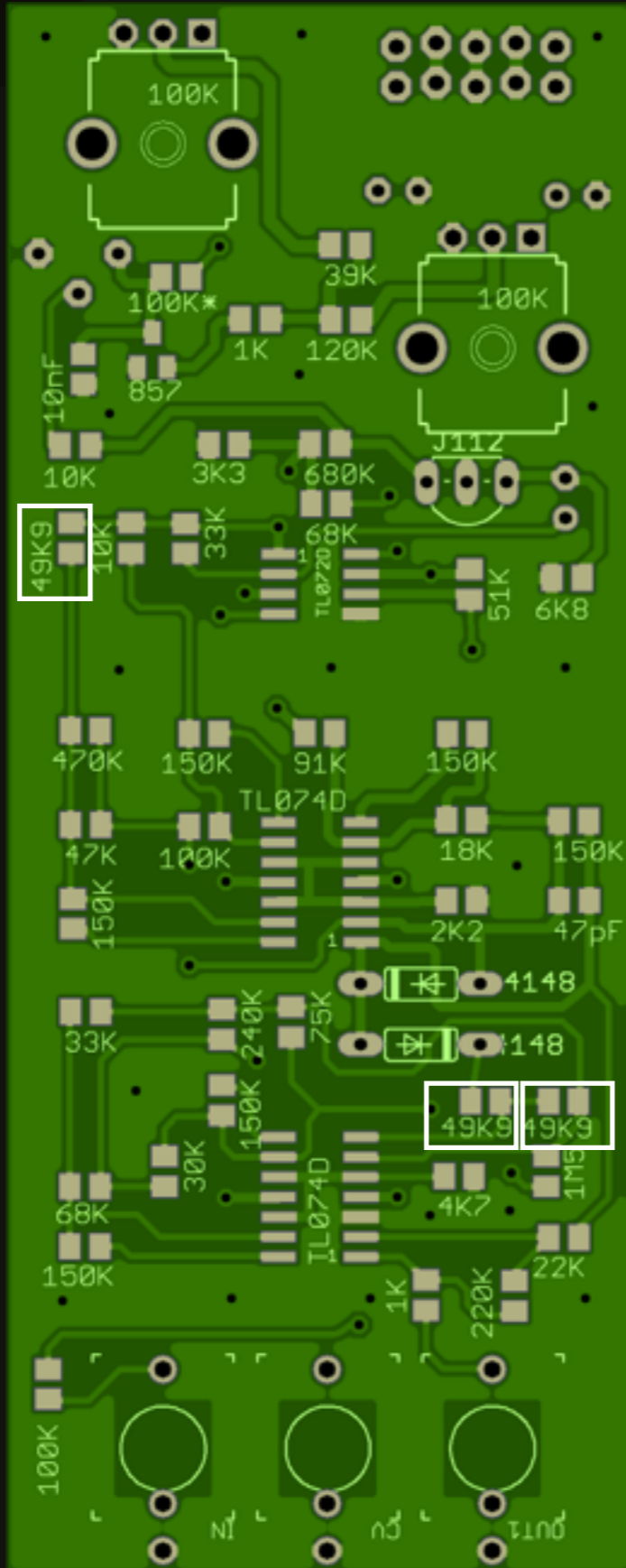
1 of

Orientation

Bipolar (either direction)



Resistors



Part Value

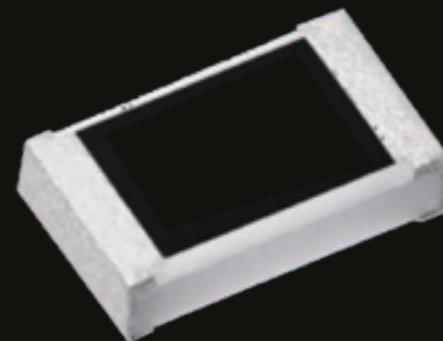
49K9 Ohm (49,900 Ohms)

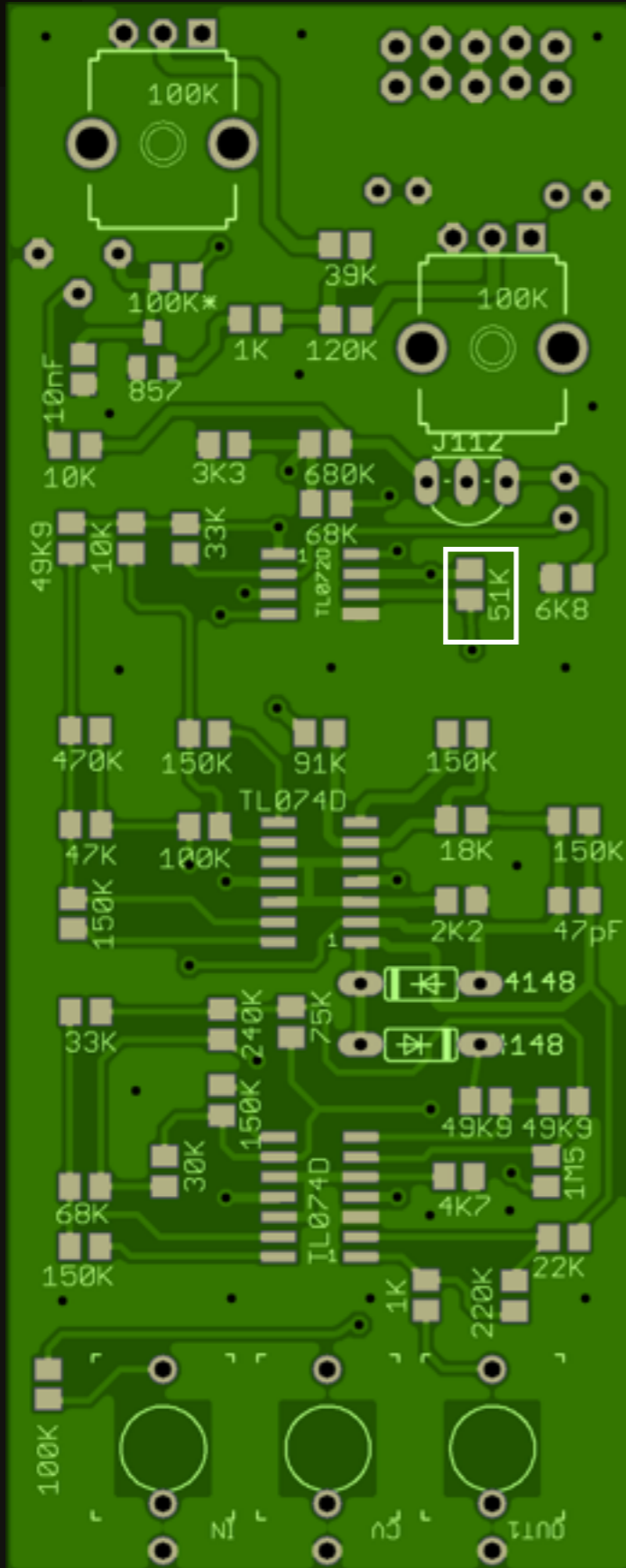
Amount

3 of

Orientation

Bipolar (either direction)





Part Value

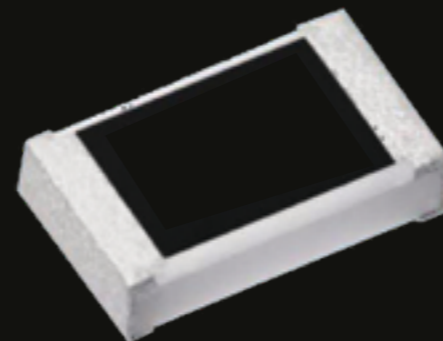
51K Ohm (51,000 Ohms)

Amount

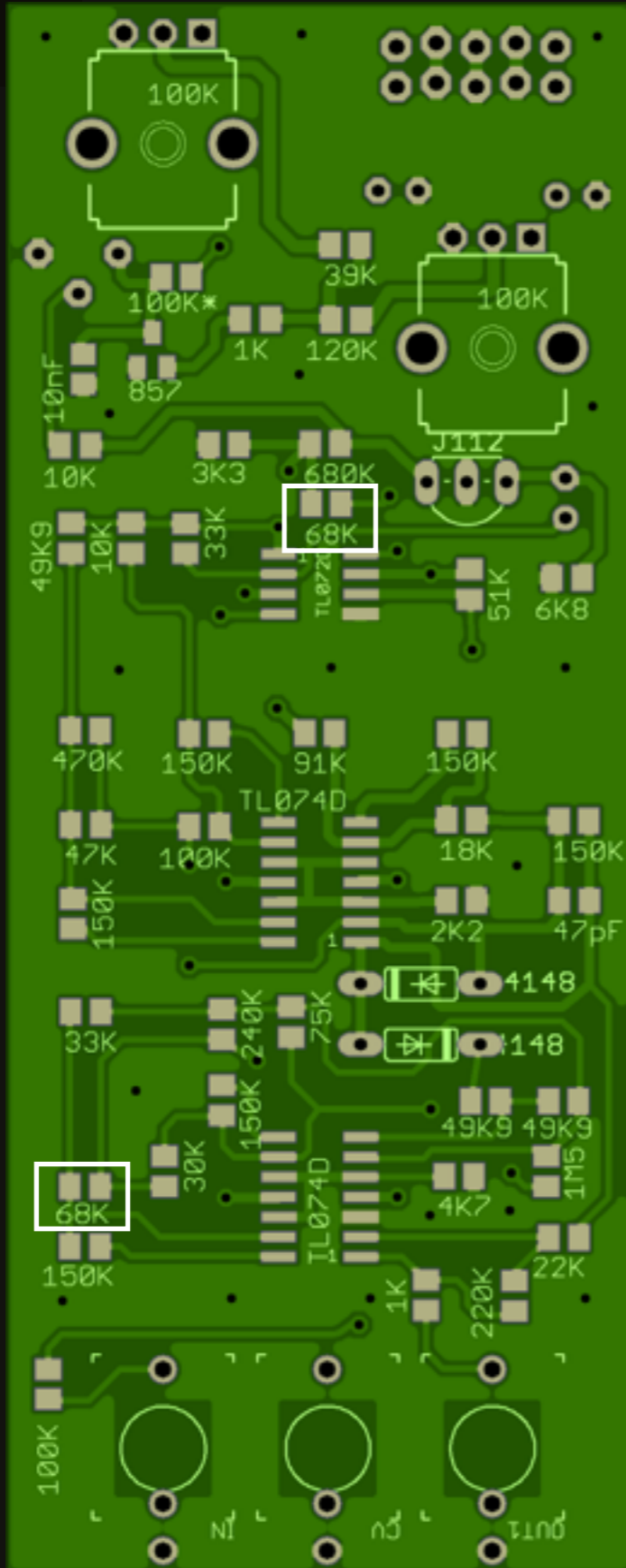
1 of

Orientation

Bipolar (either direction)



Resistors



Part Value

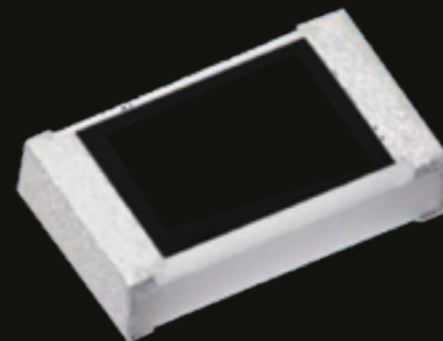
68K Ohm (68,000 Ohms)

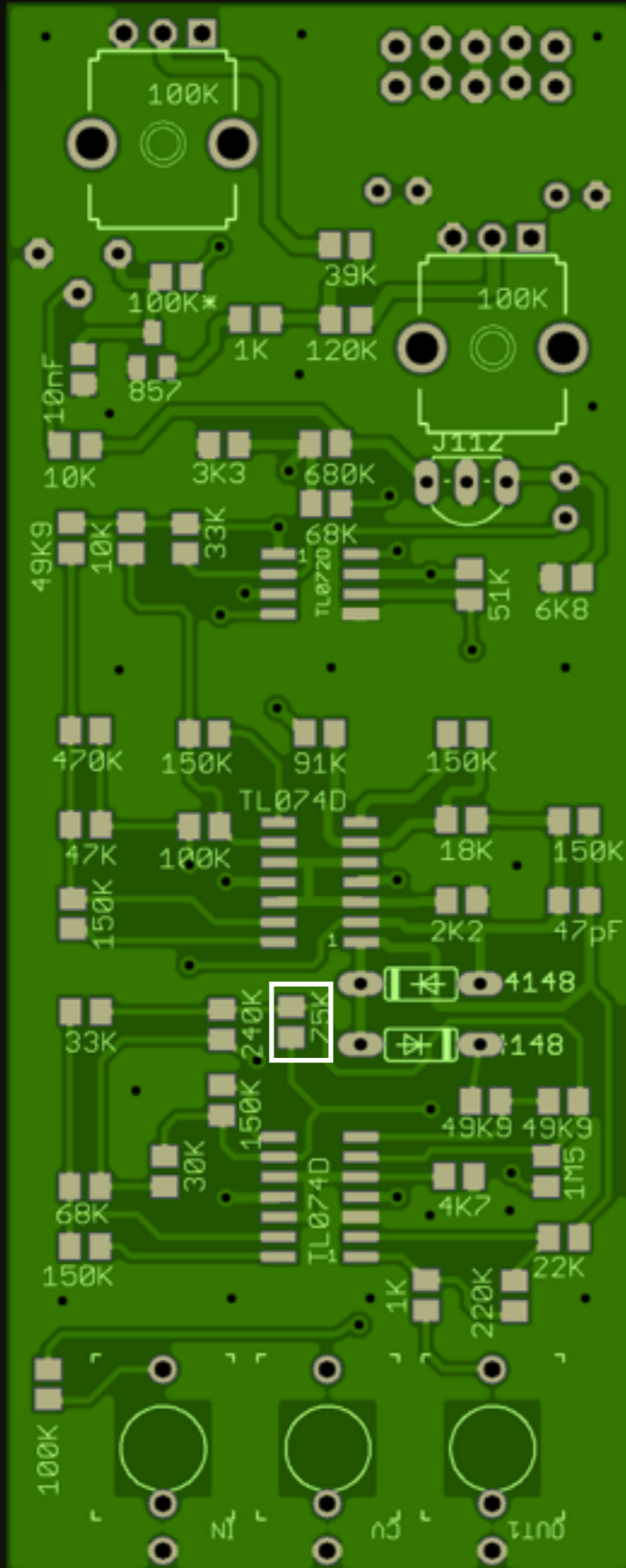
Amount

2 of

Orientation

Bipolar (either direction)





Part Value

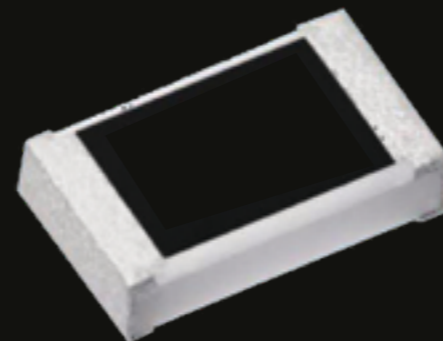
75K Ohm (75,000 Ohms)

Amount

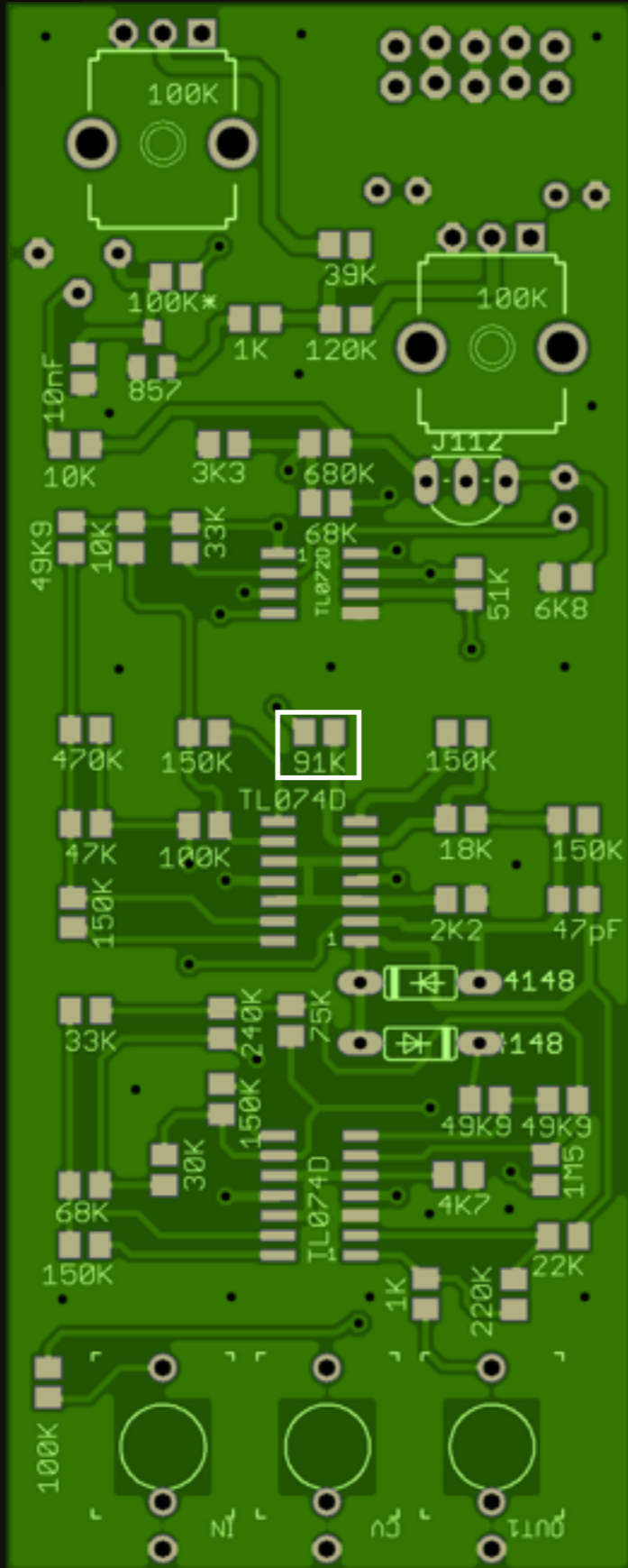
1 of

Orientation

Bipolar (either direction)



Resistors



Part Value

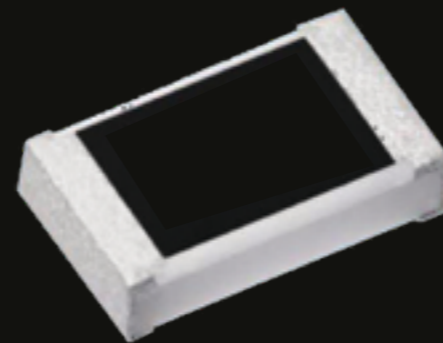
91K Ohm (91,000 Ohms)

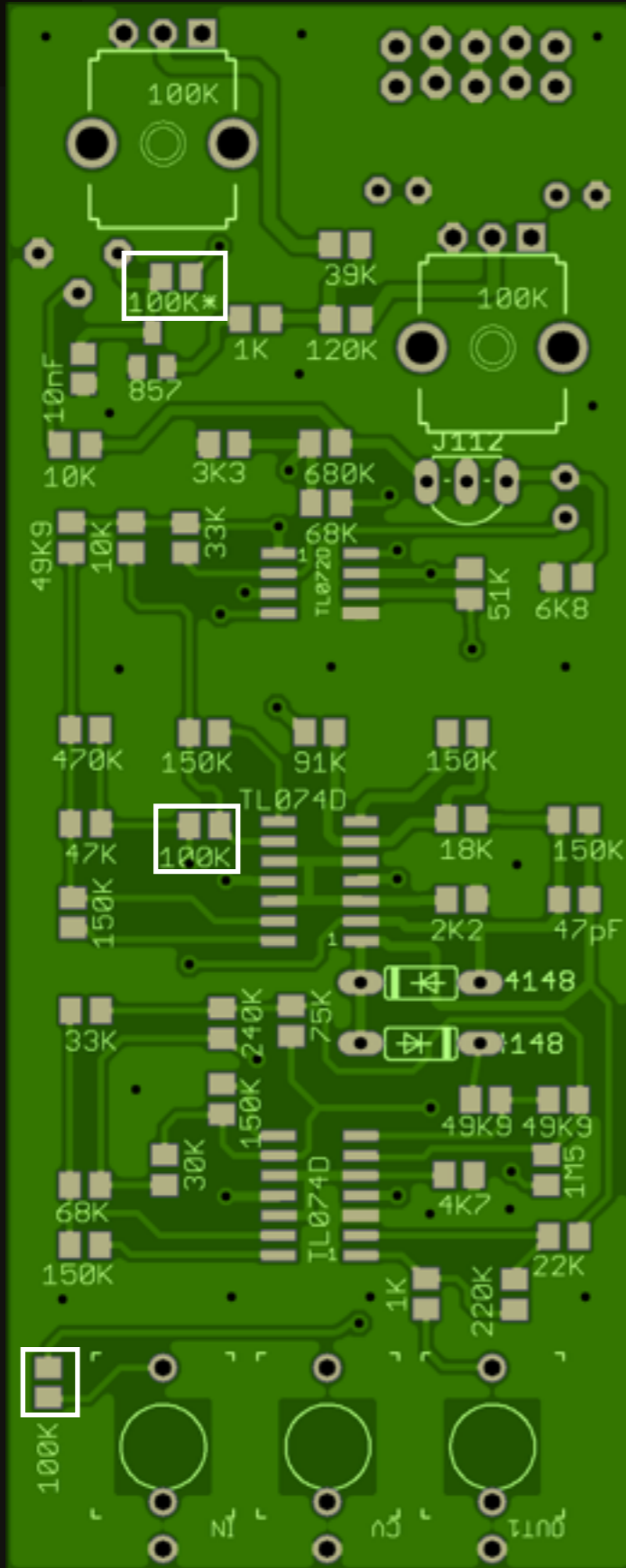
Amount

1 of

Orientation

Bipolar (either direction)





Part Value

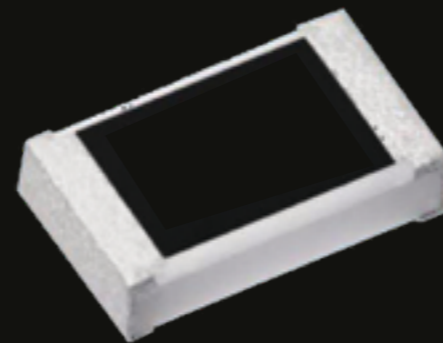
100K Ohm (100,000 Ohms)

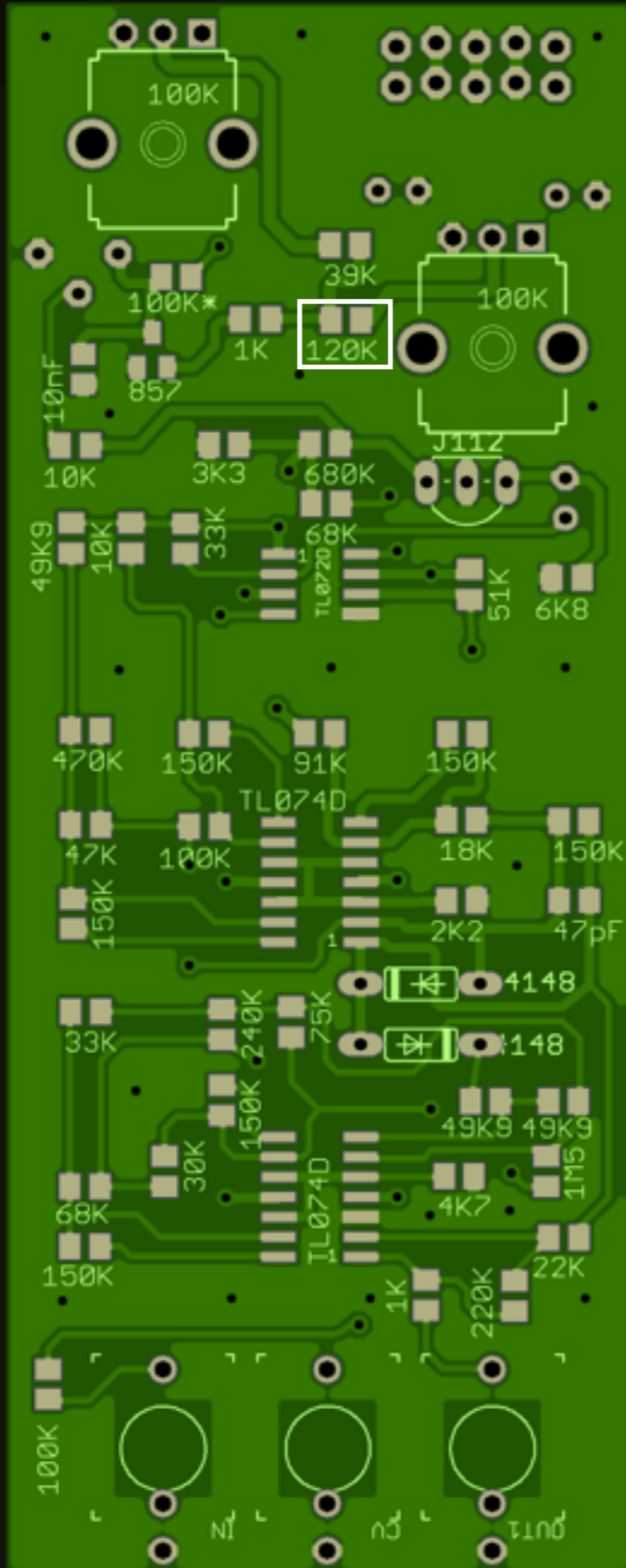
Amount

3 of

Orientation

Bipolar (either direction)





Part Value

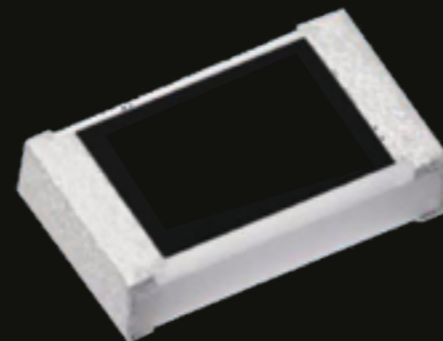
120K Ohm (120,000 Ohms)

Amount

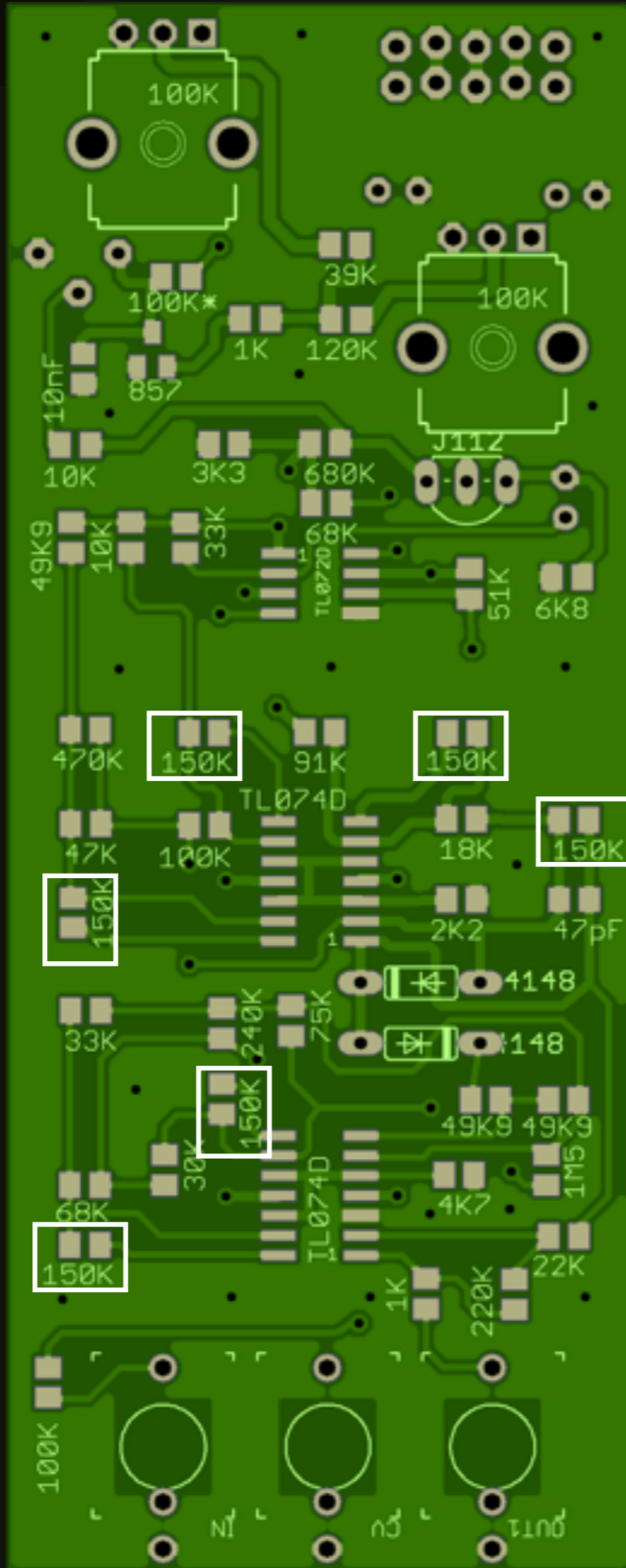
1 of

Orientation

Bipolar (either direction)



Resistors



Part Value

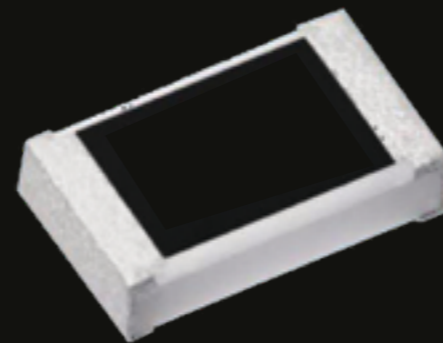
150K Ohm (150,000 Ohms)

Amount

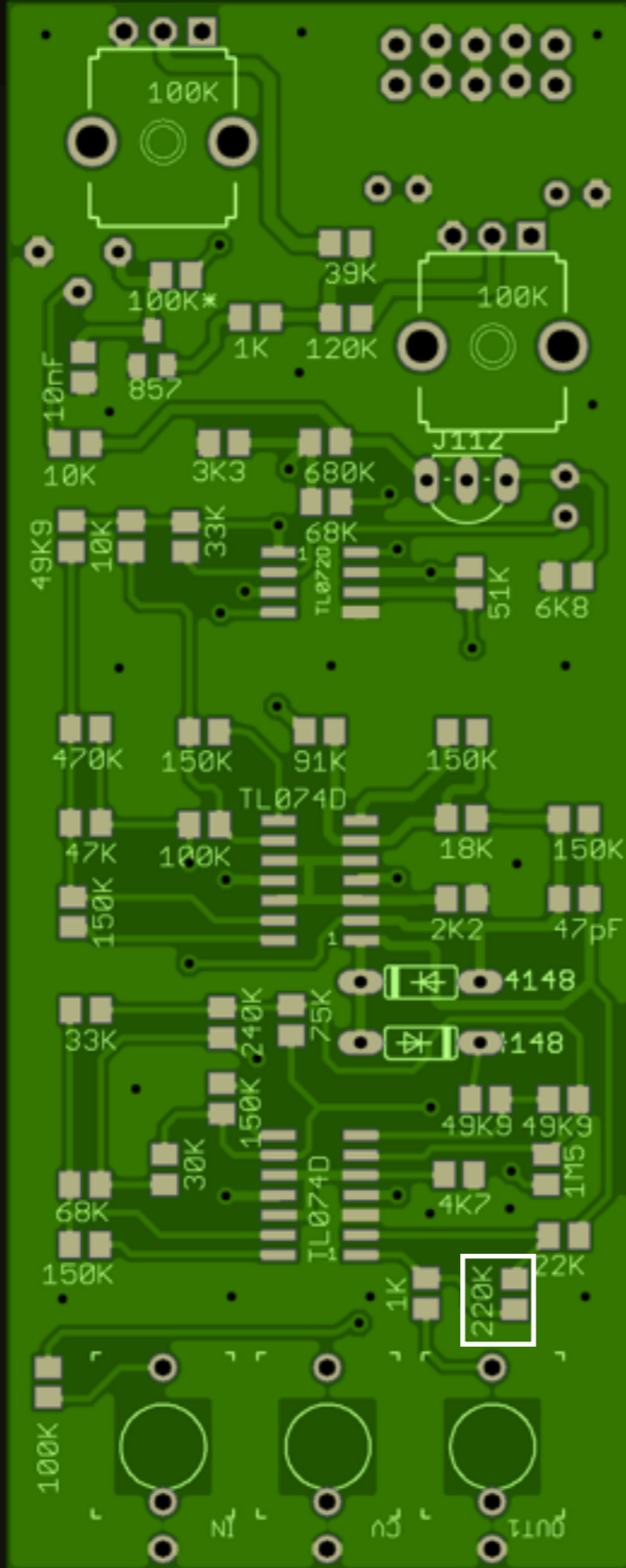
6 of

Orientation

Bipolar (either direction)



Resistors



Part Value

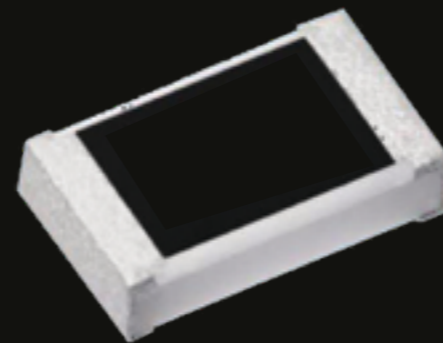
220K Ohm (220,000 Ohms)

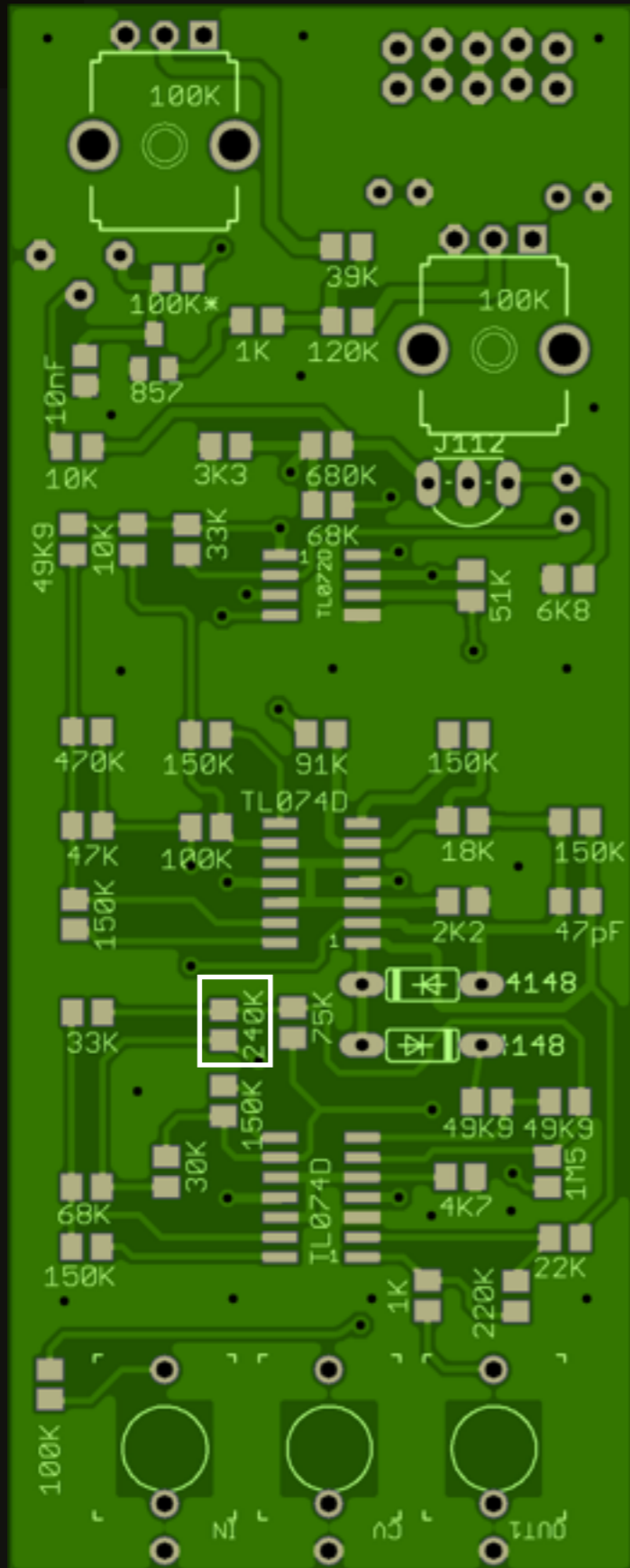
Amount

1 of

Orientation

Bipolar (either direction)





Part Value

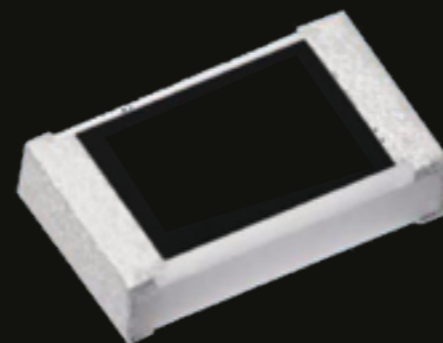
240K Ohm (240,000 Ohms)

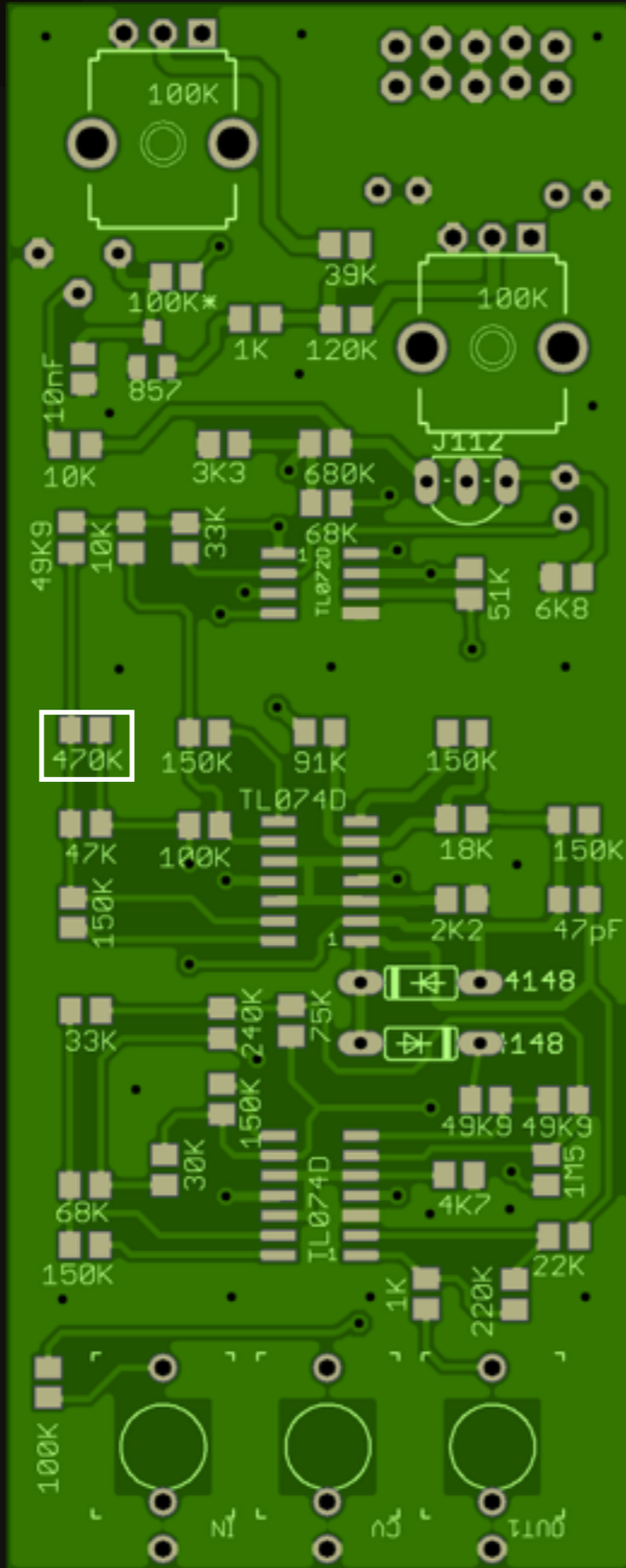
Amount

1 of

Orientation

Bipolar (either direction)





Part Value

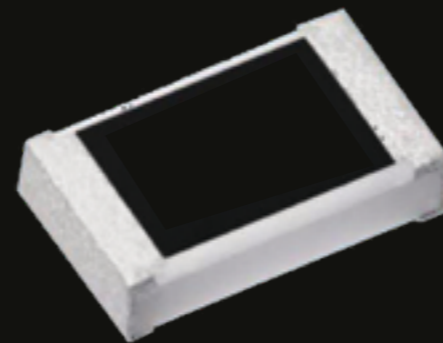
470K Ohm (470,000 Ohms)

Amount

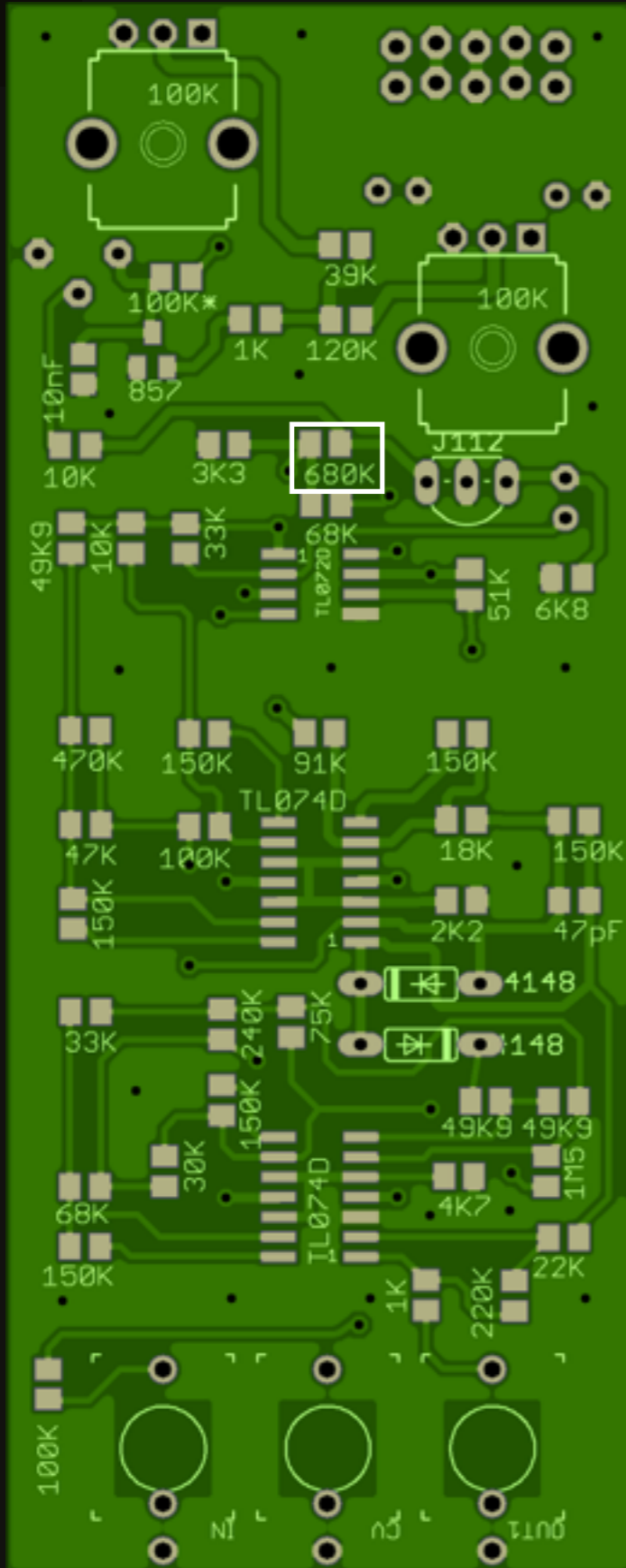
1 of

Orientation

Bipolar (either direction)



Resistors



Part Value

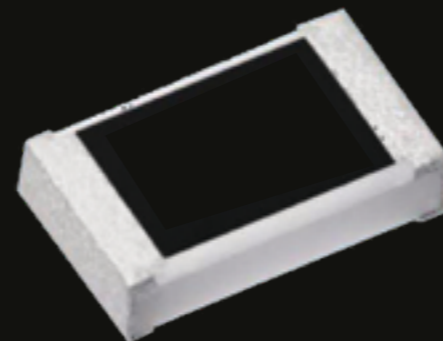
680K Ohm (680,000 Ohms)

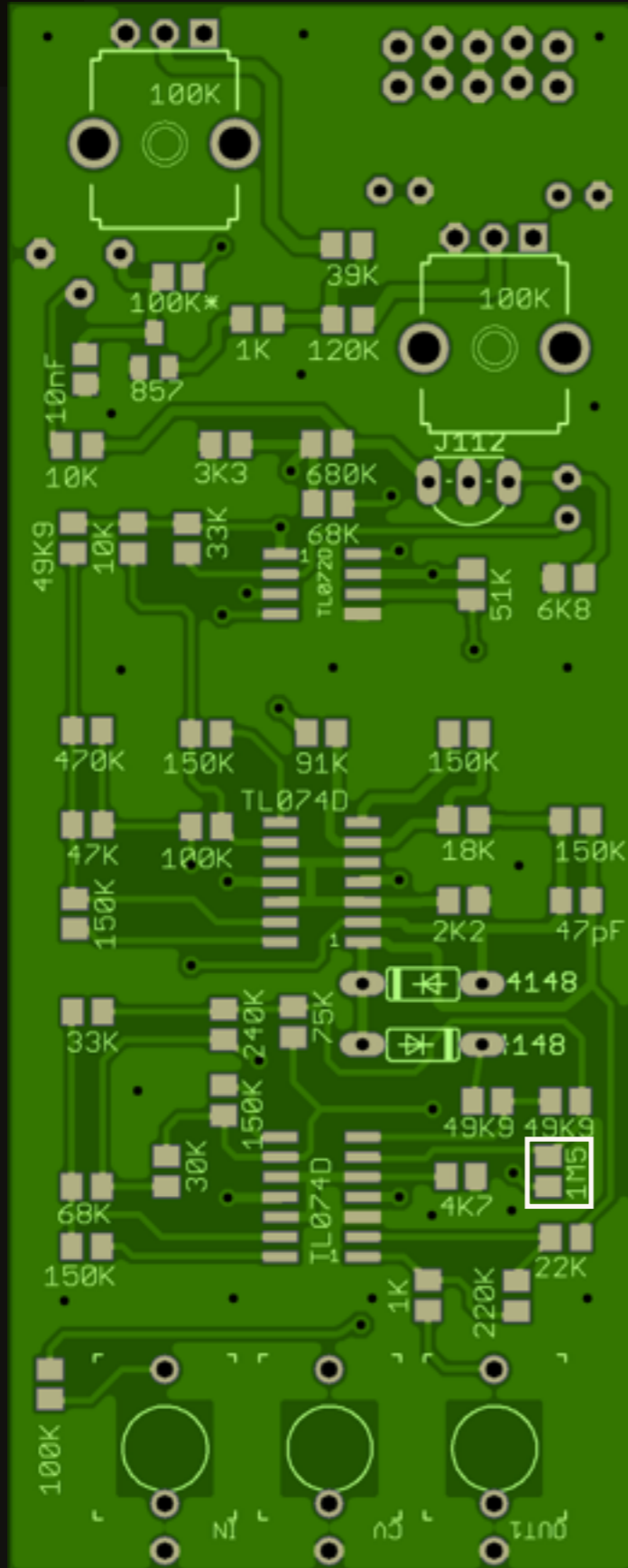
Amount

1 of

Orientation

Bipolar (either direction)





Part Value

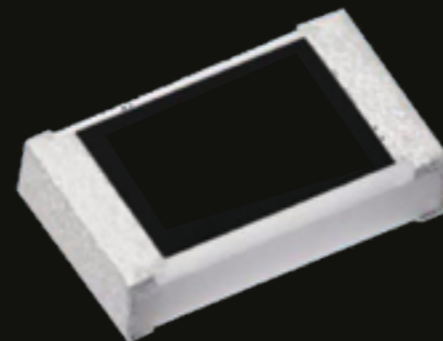
1M5 Ohm (1,500,000 Ohms)

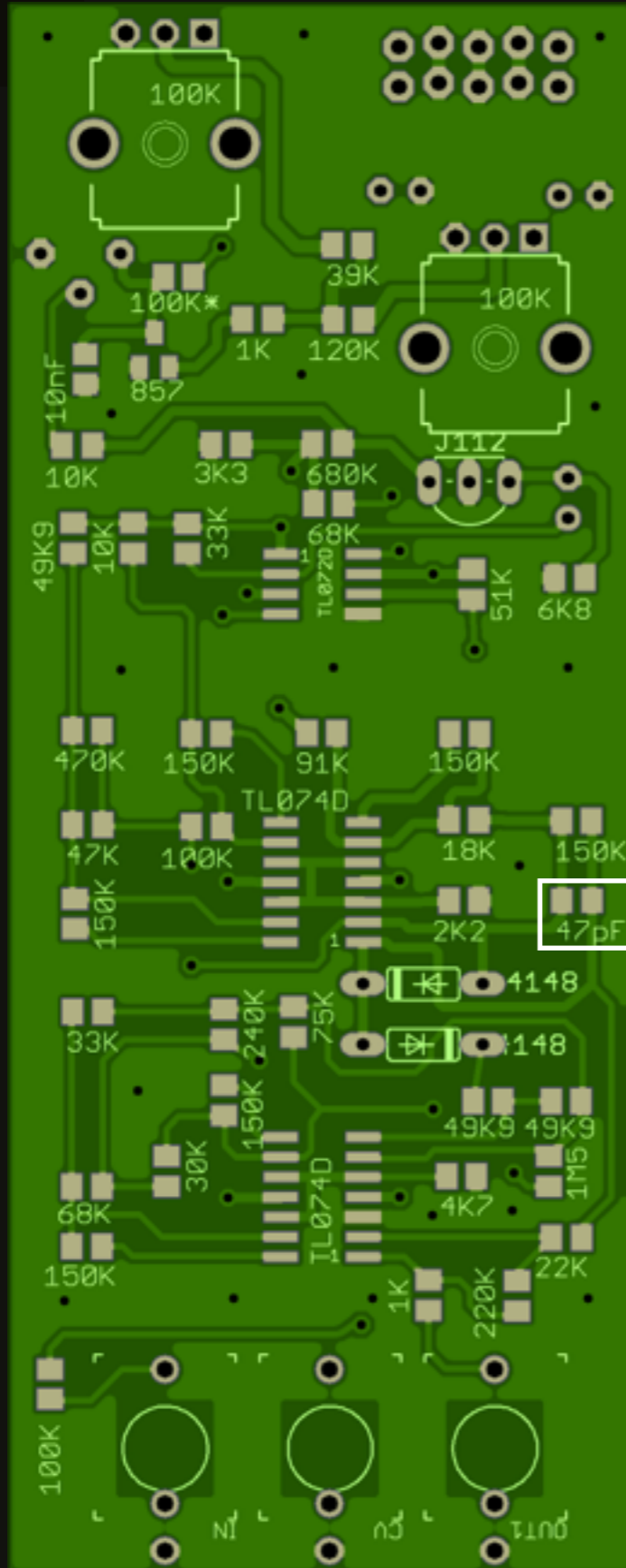
Amount

1 of

Orientation

Bipolar (either direction)





Part Value

47pF (47 pico-Farad)

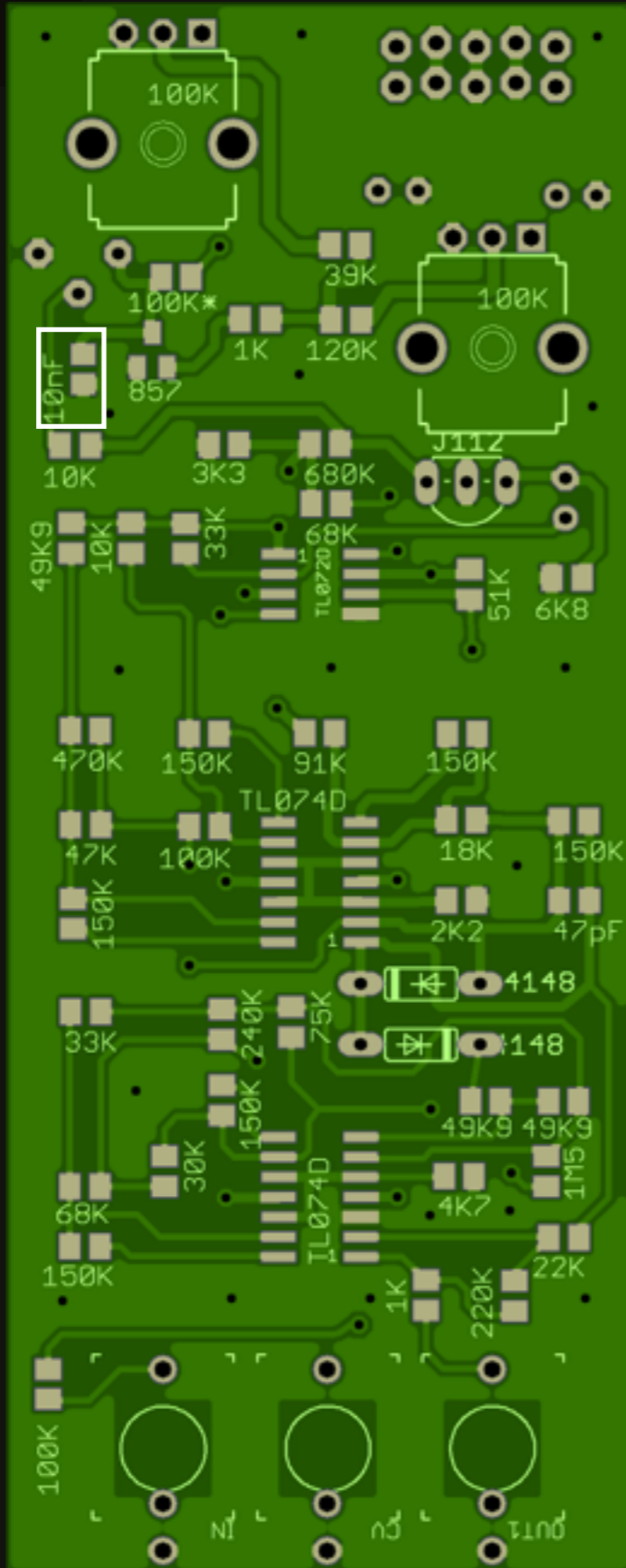
Amount

1 of

Orientation

Bipolar (either direction)





Part Value

10nF (10 nano-Farad)

Amount

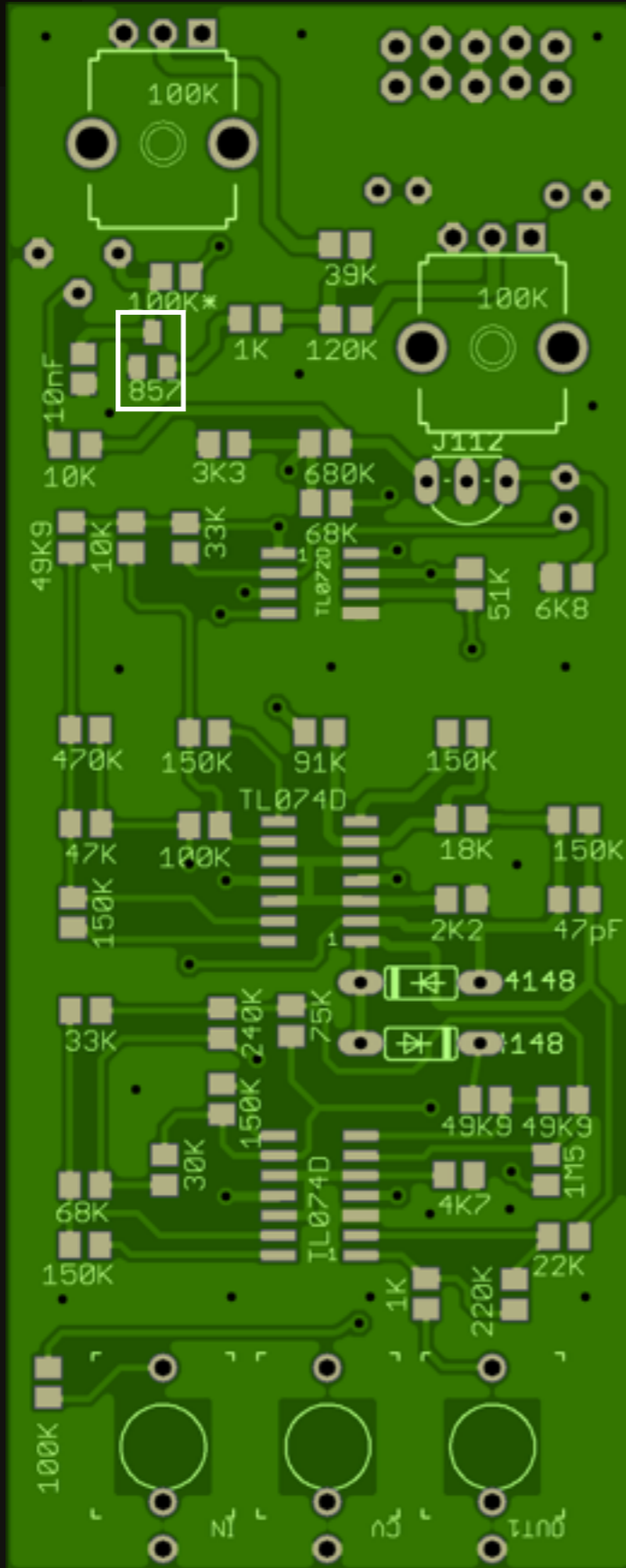
1 of

Orientation

Bipolar (either direction)



Transistor



Part Value

BC857 PNP Transistor

Amount

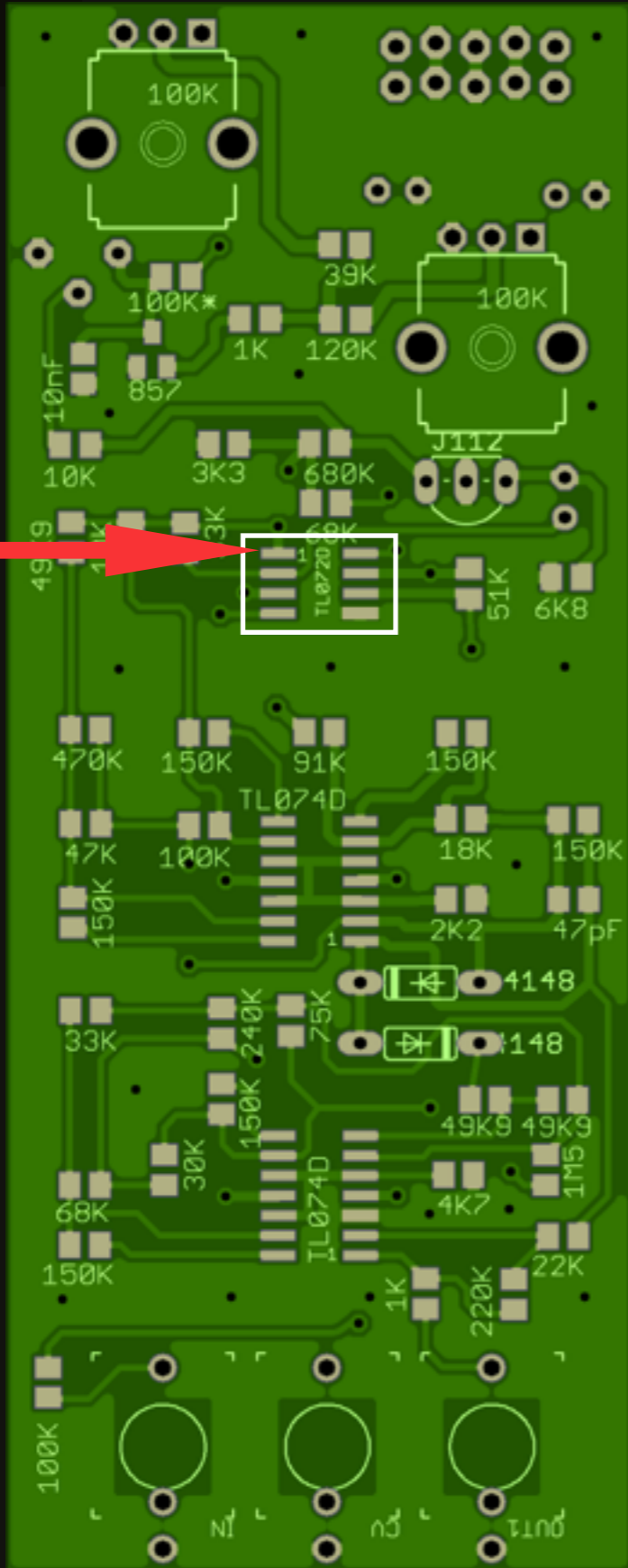
1 of

Orientation

Directional - As per image



Operational Amplifiers (Op-amps)



Part Value

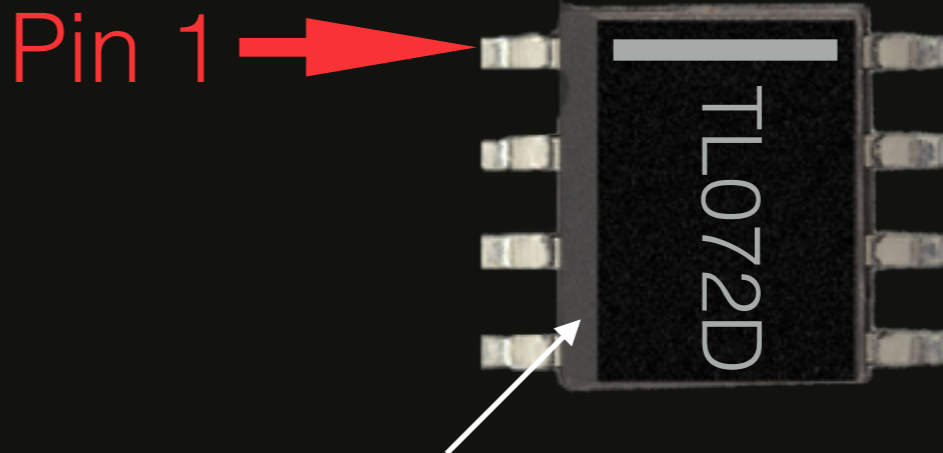
TL072D Dual Op-Amp

Amount

1 of

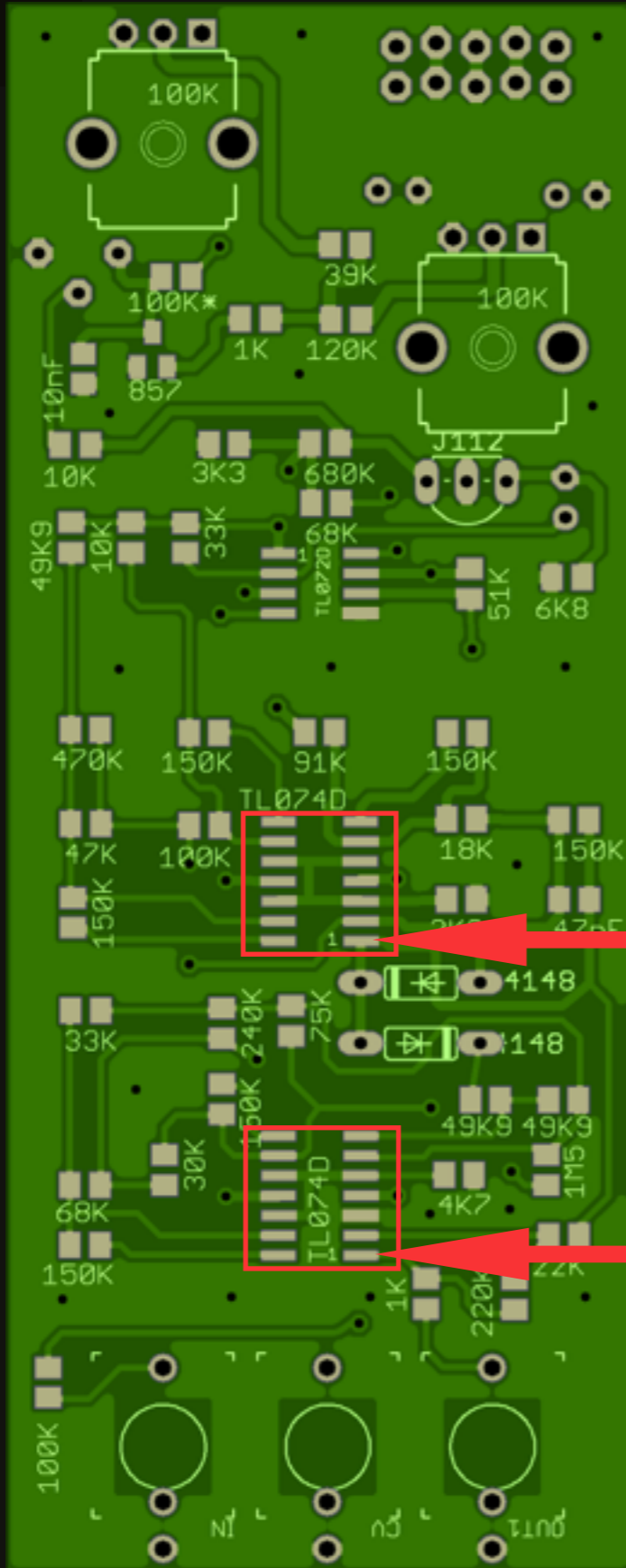
Orientation

Directional - As per image



Notice: chamfered edge

Operational Amplifiers (Op-amps)



Part Value

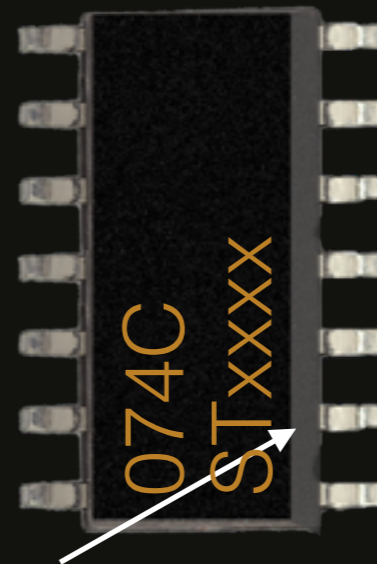
TL074D Quad Op-Amp

Amount

2 of

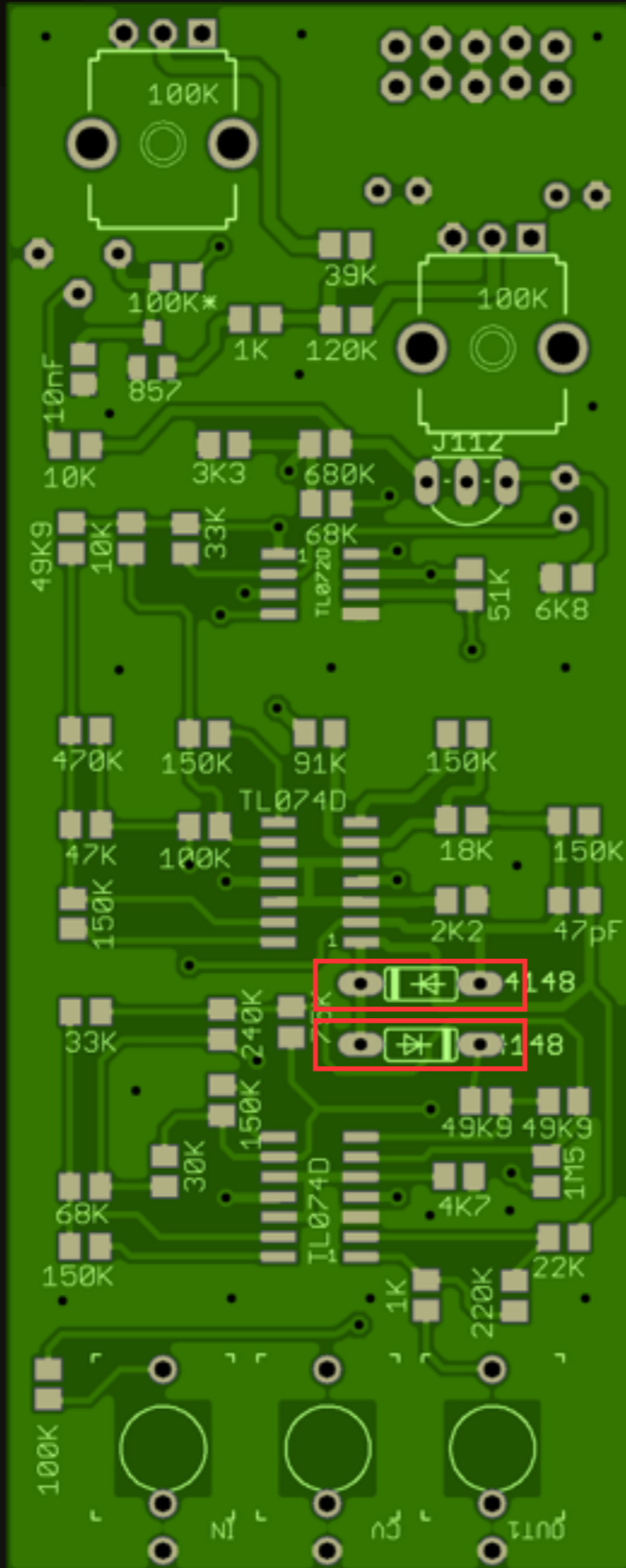
Orientation

Directional - As per image



Notice: chamfered edge

Operational Amplifiers (Op-amps)



Part Value

1N4148

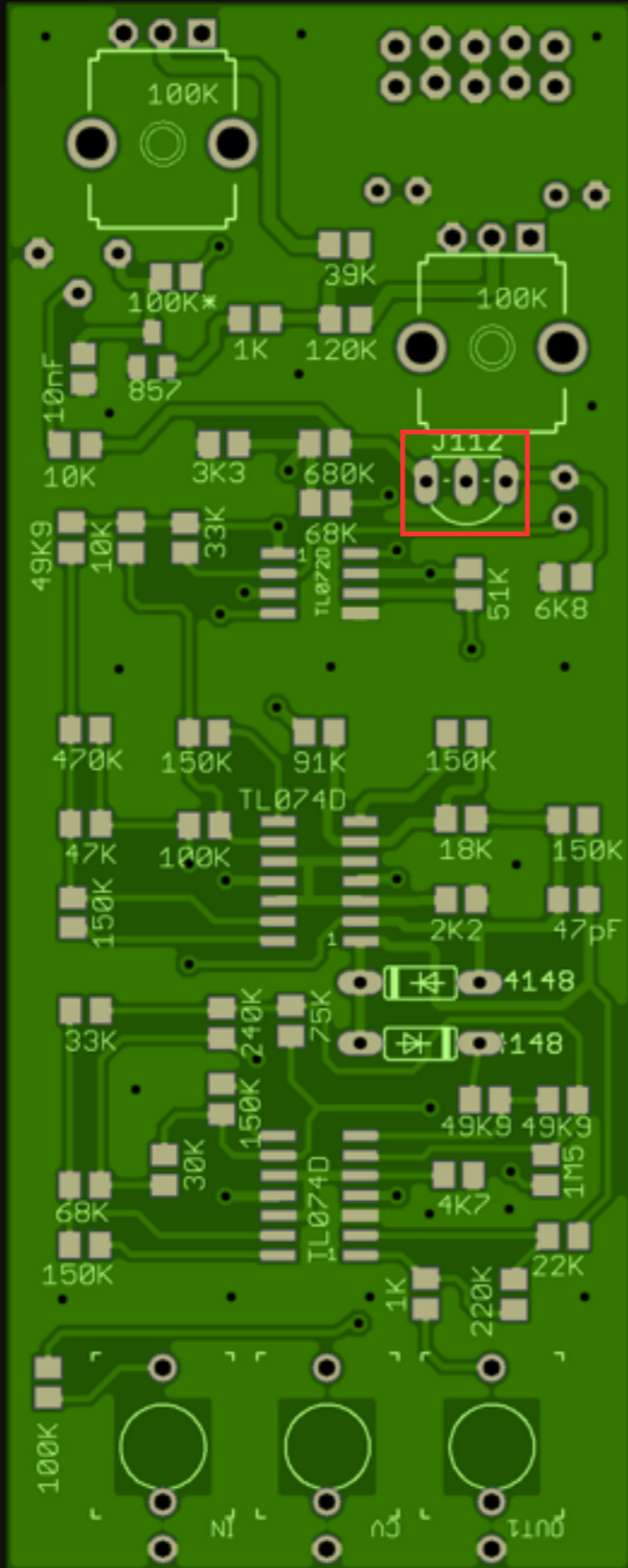
Amount

2 of

Orientation

Directional as per silkscreen

Operational Amplifiers (Op-amps)



Part Value

J112 JFet

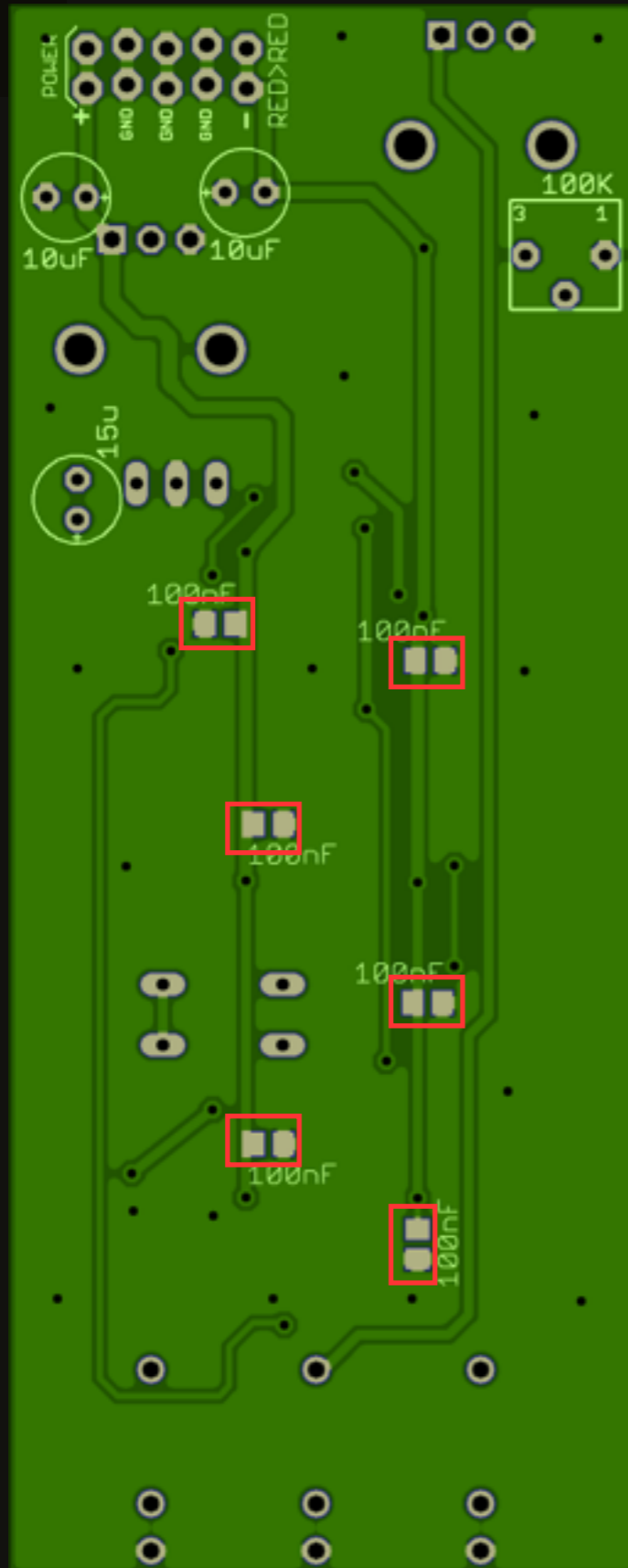
Amount

1 of

Orientation

Directional as per silkscreen

Operational Amplifiers (Op-amps)



Part Value

100nF MLCC Capacitor

Amount

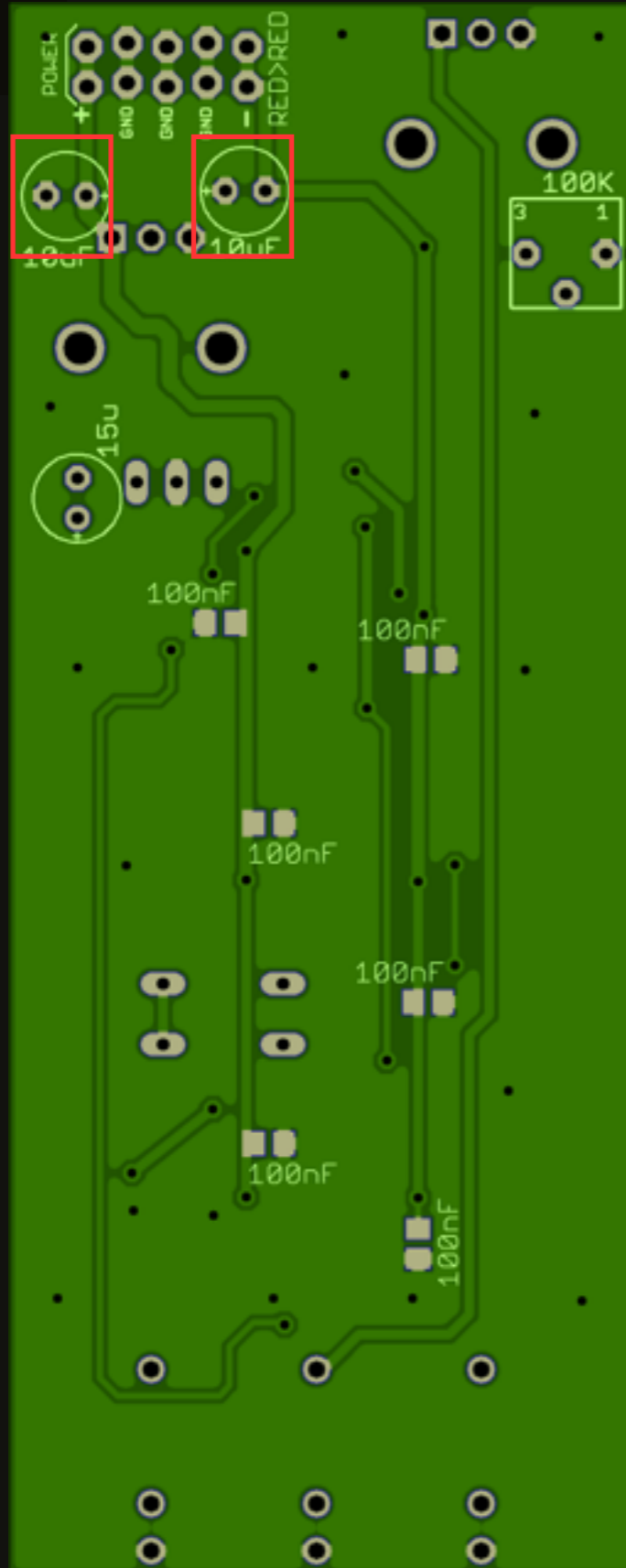
6 of

Orientation

Bipolar (either direction)



Operational Amplifiers (Op-amps)



Part Value

10uF Electrolytic

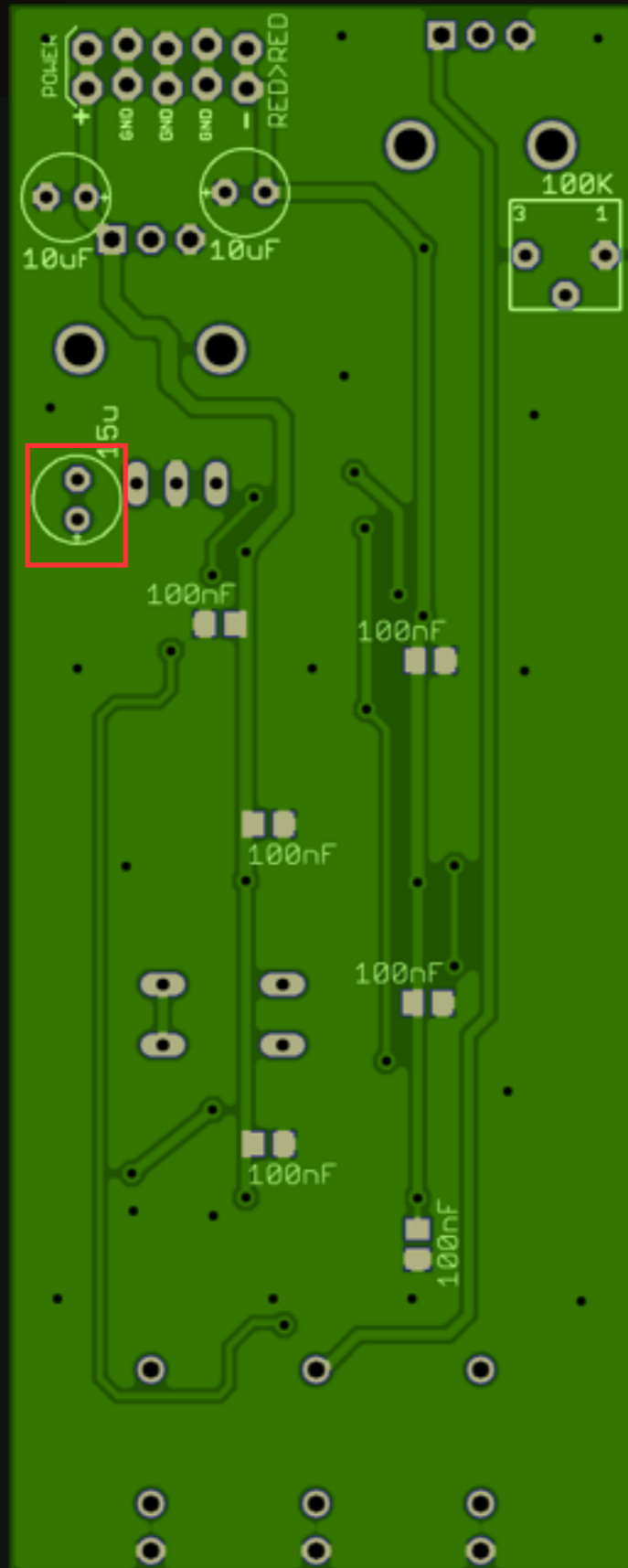
Amount

2 of

Orientation

Directional as per silkscreen

Operational Amplifiers (Op-amps)



Part Value

22uF Electrolytic

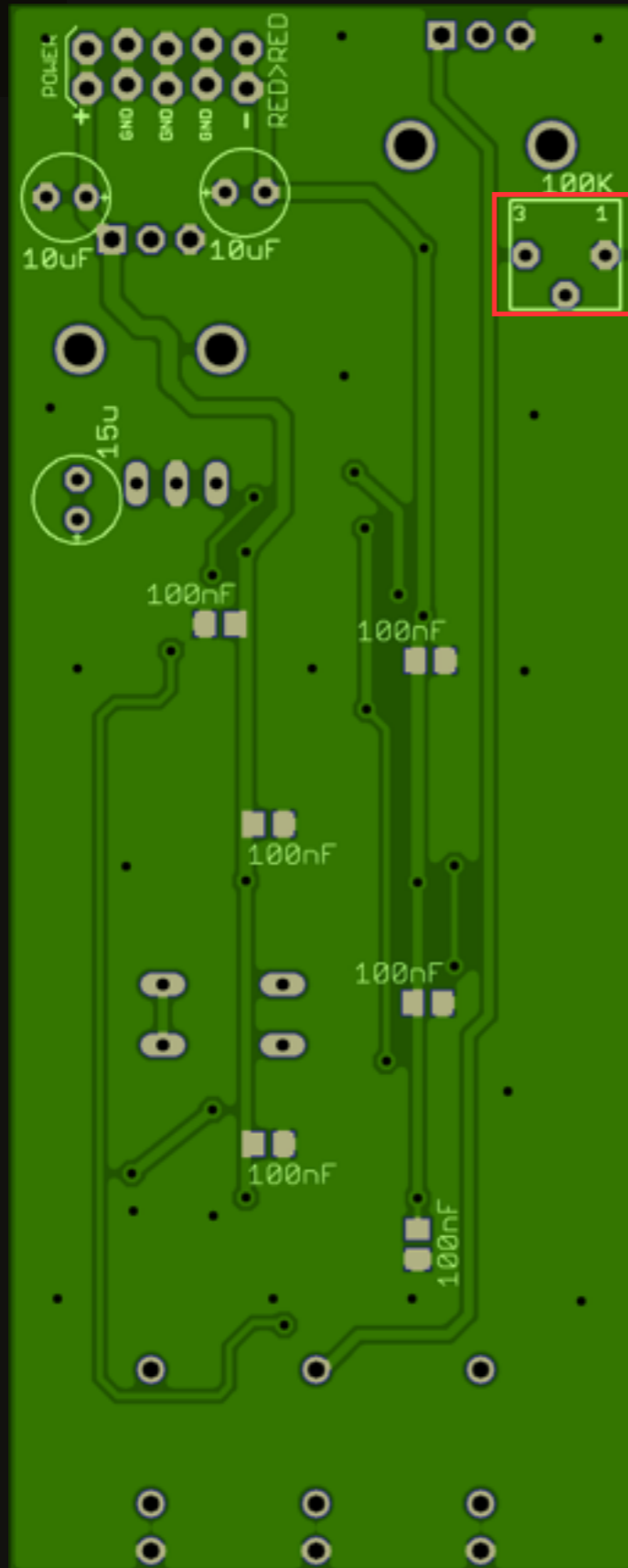
Amount

1 of

Orientation

Directional as per silkscreen

Operational Amplifiers (Op-amps)



Part Value

Trimmer 3362P Type

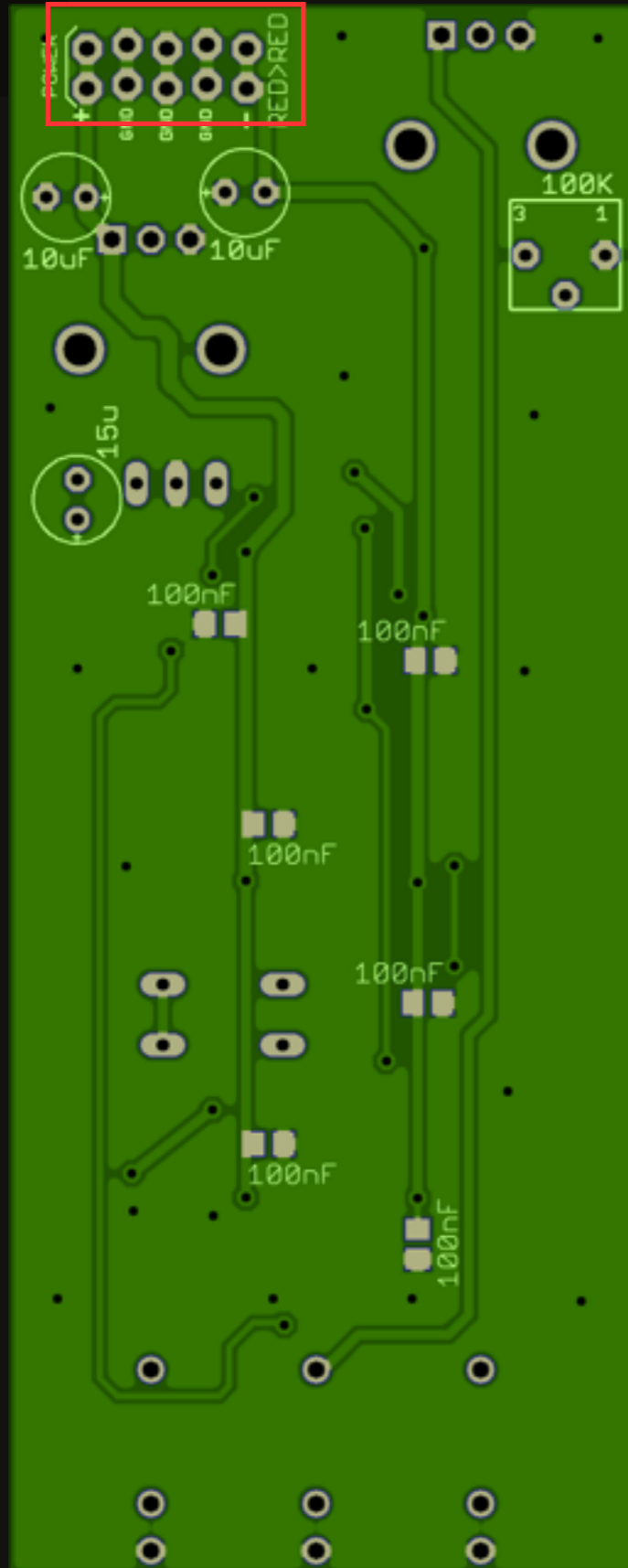
Amount

1 of

Orientation

Directional as per silkscreen

Operational Amplifiers (Op-amps)



Part Value

5 x 2 Row Pin Header

Amount

1 of

Orientation

Bidirectional